

beko

Caffe Esperto

Semi Automatic Espresso Machine

Series CE 3000



Features



2 Options 1 Touch

Delivers two delicious espresso-based coffee options at the touch of a button, fast, easy, and exceptional every time, also provides the convenience of hot water on demand for preparing a variety of beverages.



Professional 15 Bar Pressure

Applies 15 bars of pressure for efficient performance, ensuring smooth and consistent results with every use.



Colorful Touch Screen Panel

Allows users to easily brew coffee with user-friendly color touch screen panel and perform cleaning and descaling tasks effortlessly for optimal maintenance.



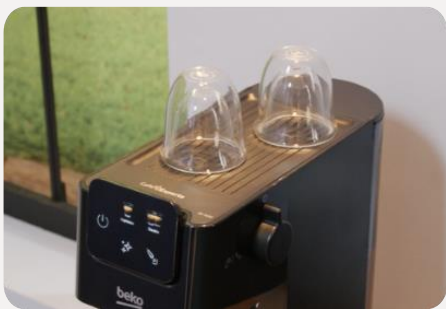
Integrated Milk Frother

Enhances coffee experience to new heights with the convenience of integrated milk frother, delivering perfectly frothed milk for beverages like Latte, Cappuccino and many more.



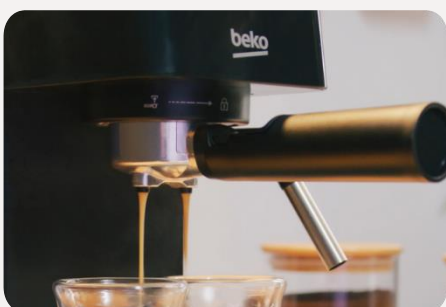
Compact Design

With its compact and elegant 14.4 cm design, it seamlessly fits onto any countertop or coffee corner.



Integrated Cup Holder

Keeps cups within reach for effortless serving, adding convenience with an integrated cup holder that also warms the cups for the perfect coffee experience.



2 Coffee Outlets

Delivers twice the satisfaction with dual pour capability and allows users to enjoy two cups of coffee at the same time.

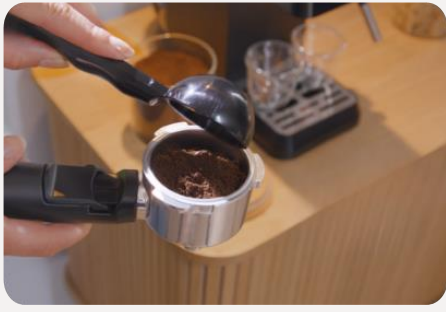


Memory Function

Customizes and saves preferred coffee amounts with the built-in memory, enabling users to adjust the coffee's intensity and achieve consistent results with just a touch.

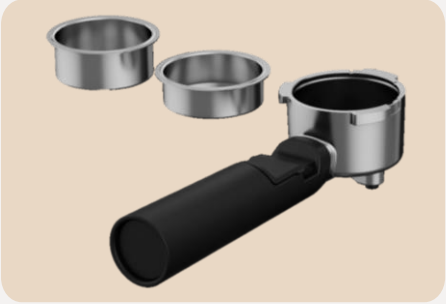
a **beko** state of mind

Features



Includes Spoon with Tamper

Enhances the art of coffee-making with tamper which ensures the perfect press for espresso and adds a touch to coffee preparation routine.



BrewSense™ Technology

Ensures perfect coffee with BrewSense™ Technology which delivers barista-quality brews with the help of 51 mm portafilter featuring easy knock handle.



Rinsing & Descaling in One Touch

Maintains cleanliness with rinsing & descaling functions, detachable parts including water tank, drip tray, portafilter and its baskets can be cleaned easily.



Removable Water Tank

Enhances coffee experience with removable water tank with 1.1 L capacity, allowing for easy preparation, handling and cleaning.



Silent Operation

Features a silent operation that guarantees a peaceful and serene brewing experience.



Easy Repairability

User-friendly detachable design ensures hassle-free access to all parts, allows to address any issues efficiently and effectively.

a **beko** state of mind

CEP 5302 B

Functions & Features

220-240 V ~ 50-60 Hz
1628 Watts Power
15 Bar Pressure
Color Film Touch Panel Screen
Espresso, Double in One Touch
2 Coffee Outlets
Integrated Milk Frother
Rinsing & Descaling Functions
BrewSense™ Technology
Adjustable Coffee Amounts
Cup Holder
Auto Shut-off
1.1 L Detachable Water Tank Capacity
Up to 0.2 L Removable Drip Tray
Drip Tray Level Indicator
Short Pre-heating Time
Basket Capacities:
Single: 8 g
Double: 15 g

Accessories

Coffee Tamper with Spoon

Product Dimensions

14.4 cm (Width)
30.8 cm (Height)
42.3 cm (Depth)
32.5 cm (Depth w/o portafilter)
Weight: 3.85±0.5 kg

Design & Color Specifications

Color: Black

Sustainability

BPA Free Product
EPS-free Packaging
100% Recycled and Recyclable Cardboard

Hot Coffee Drinks



Explore 30+ Coffee Recipes with HomeDirect Mobile App

Through HomeDirect Mobile App, users can access over 30 coffee-related recipes, including various refreshing cold coffee options.



a **beko** state of mind

*Specifications are correct at time of printing. Specifications may change without prior notice.