



Washing Machine
User's Manual

Mašina za pranje veša
Uputstvo za upotrebu



WUE 7722 XW0

EN/SB





This product was manufactured using the latest technology in environmentally friendly conditions.

1 General safety instructions

This section includes security instructions which may help prevent the injuries and material damage risks. All kinds of warranties shall be invalid if these instructions are not observed.

1.1 Life and property safety

- ▶ Never place the product on a carpet-covered floor. Electrical parts will get overheated since air cannot circulate from under the device. This will cause problems with your product.
- ▶ Unplug the product if it is not in use.
- ▶ Always have the installation and repairing procedures carried out by the Authorised Service Agent. The manufacturer shall not be held liable for damages that may arise from procedures carried out by unauthorised persons.
- ▶ The water supply and draining hoses must be securely fastened and remain undamaged. Otherwise, water leak may occur.
- ▶ While there is still water inside the product, never open the loading door or remove the filter. Otherwise, risk of flooding and injury from hot water will occur.
- ▶ Do not force open the locked loading door. Door can be opened a few minutes after the washing cycle ends. In case of forcing the loading door to open, the door and the lock mechanism may get damaged.
- ▶ Use detergents, softeners and supplements suitable for automatic washing machines only.
- ▶ Follow the instructions on the label of textiles and the detergent package.

1.2 Children's safety

- ▶ This product can be used by the children who are at the age of 8 and over and the people whose physical, sensory or mental skills are not fully developed or who do not have necessary required experience and knowledge as long as they are supervised or trained about the safe use of the product and its risks. Children should not play with the device. Cleaning and maintenance works should not be performed by children unless they are supervised by someone. Children of less than 3 years should be kept away unless continuously supervised.
- ▶ Packaging materials may be dangerous for the children. Keep packaging materials in a safe place away from reach of the children.

- ▶ Electrical products are dangerous for the children. Keep the children away from the product when it is in use. Do not allow them to play with the product. Use child lock to prevent children from intervening with the product.
- ▶ Do not forget to close the loading door when leaving the room where the product is located.
- ▶ Store all detergents and additives in a safe place away from the reach of the children by closing the cover of the detergent container or sealing the detergent package.

1.3 Electrical safety

- ▶ If the product has a failure, it should not be operated unless it is repaired by the Authorised Service Agent. Risk of electric shock!
- ▶ This product is designed to resume operating in the event of powering on after a power interruption. If you wish to cancel the programme, see "Cancelling the programme" section.
- ▶ Plug the product into a grounded outlet protected by a 16 A fuse.
- ▶ Do not wash the product by spraying or pouring water onto it! Risk of electric shock!
- ▶ Never touch the power cable plug with wet hands! Do not grab the power cord to unplug the machine, always unplug it by holding the socket with one hand, and pulling the plug with the other hand.
- ▶ Product should be unplugged during installation, maintenance, cleaning and repair procedures.
- ▶ If the power cable is damaged, it must be replaced by the manufacturer, after sales service or a similarly qualified person (preferably an electrician)

1.4 Hot surface safety



While washing the laundry at high temperatures, the loading door glass will get hot. Considering this fact, during washing operation keep the children away from the loading door of the product to prevent them touching it.

2 Important instructions for environment

2.1 Compliance with the WEEE Directive and Disposing of the Waste Product:

This product complies with EU WEEE Directive (2012/19/EU). This product bears a classification symbol for waste electrical and electronic equipment (WEEE).



This symbol indicates that this product shall not be disposed with other household wastes at the end of its service life. Used device must be returned to official collection point for recycling of electrical and electronic devices. To find these collection systems please contact to your local authorities or retailer where the product was purchased. Each household performs important role in recovering and recycling of old appliance. Appropriate disposal of used appliance helps

prevent potential negative consequences for the environment and human health.

Compliance with RoHS Directive

The product you have purchased complies with EU RoHS Directive (2011/65/EU). It does not contain harmful and prohibited materials specified in the Directive.

2.2 Package information



Packaging materials of the product are manufactured from recyclable materials in accordance with our National Environment Regulations. Do not dispose of the packaging materials together with the domestic or other wastes. Take them to the packaging material collection points designated by the local authorities.

3 Intended use

- This product has been designed for domestic use. It is not for commercial purposes or it should not be used out of its intended use.
- The product must only be used for washing and rinsing of laundry that are marked accordingly.
- The manufacturer waives any responsibility arisen from incorrect usage or transportation.

4 Technical specifications

Complying Commission Delegated Regulation (EU) No 1061/2010

Supplier name or trademark	Beko
Model name	WUE 7722 XW0 7001540036
Height (cm)	84
Width (cm)	60
Depth (cm)	49
Single Water inlet / Double Water inlet	• / -
• Available	
Electrical input (V/Hz)	230 V / 50Hz
Total current (A)	10
Total power (W)	2200
Main model code	9217

**ENERG**
BEKO **MODEL IDENTIFIER** — (*)


The model information as stored in the product database can be reached by entering following website and searching for your model identifier (*) found on energy label:
<https://eprel.ec.europa.eu/>

4.1 Installation

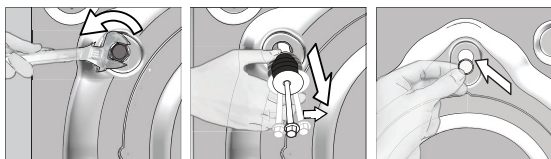
- Preparation of the location and electrical, tap water and waste water installations at the place of installation is under customer's responsibility.
- Make sure that the water inlet and discharge hoses as well as the power cable are not folded, pinched or crushed while pushing the product into its place after installation or cleaning procedures.
- Prior to installation, visually check if the product has any defects on it. If so, do not have it installed. Damaged products cause risks for your safety.

4.1.1 Appropriate installation location

- Place the product on a hard and level floor. Do not put it onto a carpet with high pile or other similar surfaces.
- When the washing machine and dryer are placed on top of each other, their total weight –when loaded– amounts to 180 kilograms. Place the product on a solid and flat floor that has sufficient load carrying capacity!
- Do not place the product on the power cable.
- Do not install the product in the environments where the temperature falls below 0 °C.
- Leaving a gap at the sides of the machine is suggested to reduce vibration and noise
- On a graduated floor, do not place the product next to the edge or on a platform.
- Do not place heat sources such as Hobs, Irons, Ovens, etc. on the washing machine and do not use them on the product.

4.1.3 Removing the transportation locks

- 1 Loosen all bolts with an appropriate wrench until they turn freely.
- 2 Remove the transport safety bolts by turning them slightly.
- 3 Insert the plastic covers in the bag containing the user manual to the openings on the rear panel.



CAUTION: Remove the transportation safety bolts before operating the washing machine! Otherwise, the product will be damaged.



Keep the transportation safety bolts in a safe place to reuse when the washing machine needs to be moved again in the future.

Install the transport safety bolts in reverse order of the disassembly procedure.

Never move the product without the transportation safety bolts properly fixed in place!

4.1.4 Connecting water supply

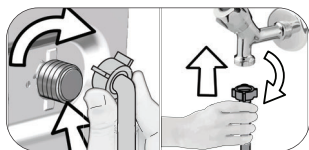


The water supply pressure required to run the product is between 1 to 10 bars (0.1 – 1 MPa). It is necessary to have 10 – 80 liters of water flowing from the fully open tap in one minute to have your machine run smoothly. Attach a pressure reducing valve if water pressure is higher.



CAUTION: Models with a single water inlet should not be connected to the hot water tap. In such a case the laundry will get damaged or the product will switch to protection mode and will not operate.

CAUTION: Do not use old or used water inlet hoses on the new product. It may cause stains on your laundry.



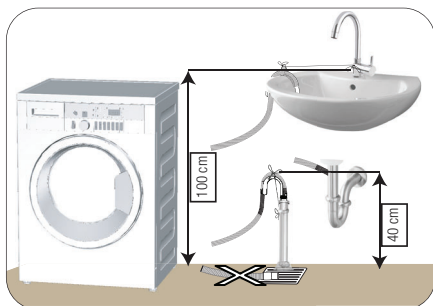
- 1 Tighten the nuts of the hose by hand. Never use a tool when tightening the nuts.
- 2 When hose connection is completed, check whether there is leak problems at the connection points by opening the taps fully. If any leaks occur, turn off the tap and remove the nut. Retighten the nut carefully after checking the seal. In order to prevent the water leaks and resultant damages, keep the taps closed when you do not use the product.

4.1.5 Connecting the drain hose to the drain

- Attach the end of the drain hose directly to waste water drain, lavatory or bathtub.



CAUTION: Your drain house will be flooded if the hose comes out of its housing during water discharge. Moreover, there is risk of scalding due to high washing temperatures! In order to prevent such situations and make sure that the machine performs water intake and discharge processes without any problem, fix the drain hose securely.



- Connect the drain hose to a minimum height of 40 cm and a maximum height of 100 cm.
- In case the drain hose is elevated after laying it on the floor level or close to the ground (less than 40 cm above the ground), water discharge becomes more difficult and the laundry may come out excessively wet. Therefore, follow the heights described in the figure.

- To prevent the waste water to go back into the machine again and to ensure easy drainage, do not immerse the end of the hose into the waste water or do not insert it into the drain for more than 15 cm. If it is too long, cut it short.
- The end of the hose should not be bent, it should not be stepped on and the hose must not be pinched between the drain and the machine.
- If the length of the hose is too short, use it by adding an original extension hose. Length of the hose may not be longer than 3.2 m. To avoid water leak failures, the connection between the extension hose and the drain hose of the product must be fitted well with an appropriate clamp as not to come off and leak.

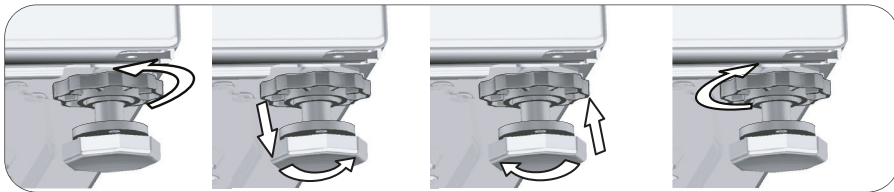
4.1.6 Adjusting the feet



CAUTION: In order to ensure that the product operates more silently and vibration-free, it must stand level and balanced on its feet. Balance the machine by adjusting the feet. Otherwise, the product may move from its place and cause crushing and vibration problems.

CAUTION: Do not use any tools to loosen the lock nuts. Otherwise, they will get damaged.

- 1 Loosen the lock nuts on the feet by hand.
- 2 Adjust the feet until the product stands in a stable and balanced way.
- 3 Tighten all lock nuts by hand again.



4.1.7 Electrical connection

Connect the product to a grounded outlet protected by a 16 A fuse. The Manufacturer shall not be liable for any damages that will arise when the product is used without grounding in accordance with the local regulations.

- Connection must comply with national regulations.
- The wiring for the electrical outlet circuit must be sufficient to meet the appliance requirements. Use of a Ground Fault Circuit Interrupter (GFCI) is recommended.
- Power cable plug must be within easy reach after installation.
- If the current value of the fuse or breaker in the house is less than 16 Amps, have a qualified electrician install a 16 Amp fuse.
- The voltage specified in the "Technical specifications" section must be equal to your mains voltage.
- Do not make connections via extension cables or multi-plugs.



CAUTION: Damaged power cables must be replaced by the Authorised Service Agents.

4.1.8 Initial use



Before starting to use the product make sure that the preparations are made which are in line with the "Important Safety and Environment Instructions" and the instructions in the "Installation" section.

To prepare the product for washing laundry, perform first operation in Drum Cleaning programme. If this program is not available in your machine, apply the method which is described in the section 4.4.2.



Use an anti-limescale suitable for the washing machines.

Some water might have remained in the product due to the quality control processes in the production. It is not harmful for the product.

4.2 Preparation

4.2.1 Sorting the laundry

- * Sort laundry according to type of fabric, color, and degree of soiling and allowable water temperature.
- * Always obey the instructions given on the garment tags.

4.2.2 Preparing laundry for washing

- Laundry items with metal attachments such as, underwired bras, belt buckles or metal buttons will damage the machine. Remove the metal pieces or wash the clothes by putting them in a laundry bag or pillow case.
- Take out all substances in the pockets such as coins, pens and paper clips, and turn pockets inside out and brush. Such objects may damage the product or cause noise problem.
- Put small size clothes such as infant's socks and nylon stockings in a laundry bag or pillow case.
- Place curtains in without compressing them. Remove curtain attachment items.
- Fasten zippers, sew loose buttons and mend rips and tears.
- Wash "machine washable" or "hand washable" labeled products only with an appropriate programme.
- Do not wash colours and whites together. New, dark coloured cottons release a lot of dye. Wash them separately.
- Tough stains must be treated properly before washing. If unsure, check with a dry cleaner.
- Only use the dyes / color changers and descaling agents which are appropriate to machine wash. Always follow the instructions on the package.
- Wash trousers and delicate laundry turned inside out.
- Keep laundry items made of Angora wool in the freezer for a few hours before washing. This will reduce pilling.
- Laundry that are subjected to materials such as flour, lime dust, milk powder, etc. intensely must be shaken off before placing into the machine. Such dusts and powders on the laundry may build up on the inner parts of the machine in time and can cause damage.

4.2.3 Tips for energy and water saving

Following information will help you use the product in an ecological and energy/water-efficient manner.

- Operate the product in the highest load capacity allowed for the programme you have selected, but do not overload. See, "Programme and consumption table".
- Observe the temperature instructions on the detergent packaging.
- Wash slightly soiled laundry at low temperatures.
- Use faster programmes for small quantities of lightly soiled laundry.
- Do not use prewash and high temperatures for laundry that is not heavily soiled or stained.
- If you plan to dry your laundry in a dryer, select the highest spin speed recommended during washing process.
- Do not use more detergent than the recommended on the detergent packaging.

4.2.4 Loading the laundry

1. Open the laundry cover.
2. Put the laundry items into the machine in a loose manner.
3. Push and close the loading cover until you hear the locking sound. Ensure that no items are caught in the door. The loading door is locked while a programme is running. The door can only be opened a while after the programme comes to an end.

4.2.5 Correct load capacity

The maximum load capacity depends on the type of laundry, the degree of soiling and the washing programme desired.

Machine automatically adjusts the water amount according to the weight of the laundry put inside it.

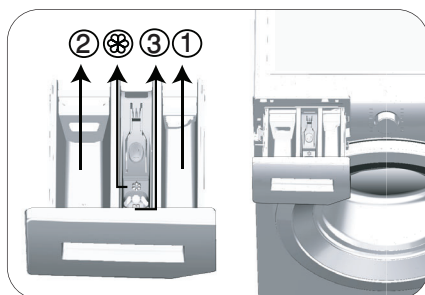


WARNING: Follow the information in the "Programme and consumption table". When overloaded, machine's washing performance will drop. Moreover, noise and vibration problems may occur.

4.2.6 Using detergent and softener



When using detergent, softener, starch, fabric dye, bleach and decolorant, descaling agents; read the manufacturer's instructions written on the package and follow the dosages specified. Use measuring cup if available.



The detergent drawer is composed of three compartments:

- (1) for prewash
- (2) for main wash
- (3) for softener
- (⊗) in addition, there is a siphon piece in the softener compartment.

Detergent, softener and other cleaning agents

- Add detergent and softener before starting the washing programme.
 - While the washing cycle is in progress, do not leave the detergent dispenser open!
 - When using a programme without prewash, do not put any detergent into the prewash compartment (compartment nr. "1").
 - In a programme with prewash, do not put liquid detergent into the prewash compartment (compartment nr. "1").
 - Do not select a programme with prewash if you are using a detergent bag or dispensing ball. Place the detergent bag or the dispensing ball directly among the laundry in the machine.
- If you are using liquid detergent, do not forget to place the liquid detergent container into the main wash compartment (compartment number "2").

Choosing the detergent type

Detergent type to be used depends on the washing programme, fabric type and color.

- Use different detergents for coloured and white laundry.
- Wash your delicate clothes only with special detergents (liquid detergent, wool shampoo, etc.) intended solely for delicate clothes and at suggested programmes.
- When washing dark coloured clothes and quilts, it is recommended to use liquid detergent.
- Wash woolens at suggested programme with special detergent made specifically for woolens
- Please review the program descriptions part for suggested program for different textiles.
- All recommendations about detergents are valid for selectable temperature range of programmes.



CAUTION: Use only detergents manufactured specifically for washing machines.

CAUTION: Do not use soap powder.

Adjusting detergent amount

The amount of washing detergent to be used depends on the amount of laundry, the degree of soiling and water hardness.

- Do not use amounts exceeding the dosage quantities recommended on the detergent package to avoid problems of excessive foam, poor rinsing, financial savings and finally, environmental protection.
- Use lesser detergent for small amounts or lightly soiled clothes.

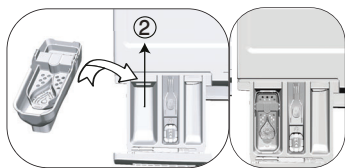
Using softeners

Pour the softener into the softener compartment of the detergent drawer.

- Do not exceed the (>max<) level sign on the softener compartment.
- If the softener has lost its fluidity, dilute it with water before putting it in the detergent drawer.

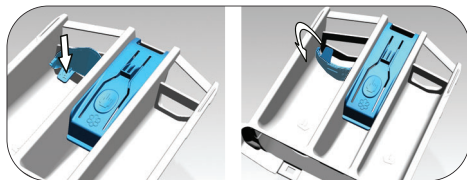
Using liquid detergents

If the product contains a liquid detergent cup:



- Put the liquid detergent container into the compartment no "2".
- If the liquid detergent lost its fluidity, dilute it with water before putting it into the detergent container.

If the product is equipped with a liquid detergent part:



- When you want to use liquid detergent, press on the point shown to rotate the apparatus. The part that falls off will function as a barrier for the liquid detergent.
- If required, clean the apparatus with water when it is in place or by removing it.
- If you will use powder detergent, the apparatus must be secured at top position.

If the product does not contain a liquid detergent cup:

- Do not use liquid detergent for the prewash in a programme with prewash.
- Liquid detergent stains your clothes when used with Delayed Start function. If you are going to use the Delayed Start function, do not use liquid detergent.

Using gel and tablet detergent

- If the gel detergent thickness is fluidal and your machine does not contain a special liquid detergent cup, put the gel detergent into the main wash detergent compartment during first water intake. If your machine contains a liquid detergent cup, fill the detergent into this cup before starting the programme.
- If the gel detergent thickness is not fluidal or in the shape of capsule liquid tablet, put it directly into the drum before washing.
- Put tablet detergents into the main wash compartment (compartment nr. "2") or directly into the drum before washing.

Using starch

- Put the liquid soda, powder soda or the fabric dye into the softener compartment. Do not use softener and starch together in a washing cycle. Wipe the inside of the machine with a damp and clean cloth after using starch.

Using limescale remover

- When required, use limescale removers manufactured specifically for washing machines only.

Using bleaches

- Add the bleach at the beginning of the washing cycle by selecting a prewash program. Do not put detergent in the prewash compartment. As an alternative application, select a programme with extra rinse and add the bleaching agent while the machine is taking water from the detergent compartment during first rinsing step.
- Do not use bleaching agent and detergent by mixing them.
- Use just a little amount (approx. 50 ml) of bleaching agent and rinse the clothes very well as it causes skin irritation. Do not pour the bleach onto the laundry and do not use it with the colored items.
- When using oxygen-based decolorant, select a program which washes the laundry at a low temperature.
- Oxygen-based decolorant can be used with the detergent; however, if it is not at the same consistence, first put detergent in the compartment number "2" in the detergent dispenser and wait for the machine to flush the detergent when taking in water. While the machine continues taking in water, add decolorant in the same compartment.

4.2.7 Tips for efficient washing

		Clothes			
		Light Colours and Whites	Colours	Black/Dark Colours	Delicates/Woolens/Silks
		(Recommended temperature range based on soiling level: 40-90 °C)	(Recommended temperature range based on soiling level: cold -40 °C)	(Recommended temperature range based on soiling level: cold -40 °C)	(Recommended temperature range based on soiling level: cold -30 °C)
Soiling Level	Heavily Soiled (difficult stains such as grass, coffee, fruits and blood.)	It may be necessary to pre-treat the stains or perform prewash. Powder and liquid detergents recommended for whites can be used at dosages recommended for heavily soiled clothes. It is recommended to use powder detergents to clean clay and soil stains and the stains that are sensitive to bleaches.	Powder and liquid detergents recommended for colors can be used at dosages recommended for heavily soiled clothes. It is recommended to use powder detergents to clean clay and soil stains and the stains that are sensitive to bleaches. Use detergents without bleach.	Liquid detergents suitable for colors and dark colors can be used at dosages recommended for heavily soiled clothes.	Prefer liquid detergents produced for delicate clothes. Woolen and silk clothes must be washed with special woolen detergents.
	Normally Soiled (For example, stains caused by body on collars and cuffs)	Powder and liquid detergents recommended for whites can be used at dosages recommended for normally soiled clothes.	Powder and liquid detergents recommended for colors can be used at dosages recommended for normally soiled clothes. Detergents which do not contain bleach should be used.	Liquid detergents suitable for colors and dark colors can be used at dosages recommended for normally soiled clothes.	Prefer liquid detergents produced for delicate clothes. Woolen and silk clothes must be washed with special woolen detergents.
	Lightly Soiled (No visible stains exist.)	Powder and liquid detergents recommended for whites can be used at dosages recommended for lightly soiled clothes.	Powder and liquid detergents recommended for colors can be used at dosages recommended for lightly soiled clothes. Detergents which do not contain bleach should be used.	Liquid detergents suitable for colors and dark colors can be used at dosages recommended for lightly soiled clothes.	Prefer liquid detergents produced for delicate clothes. Woolen and silk clothes must be washed with special woolen detergents.

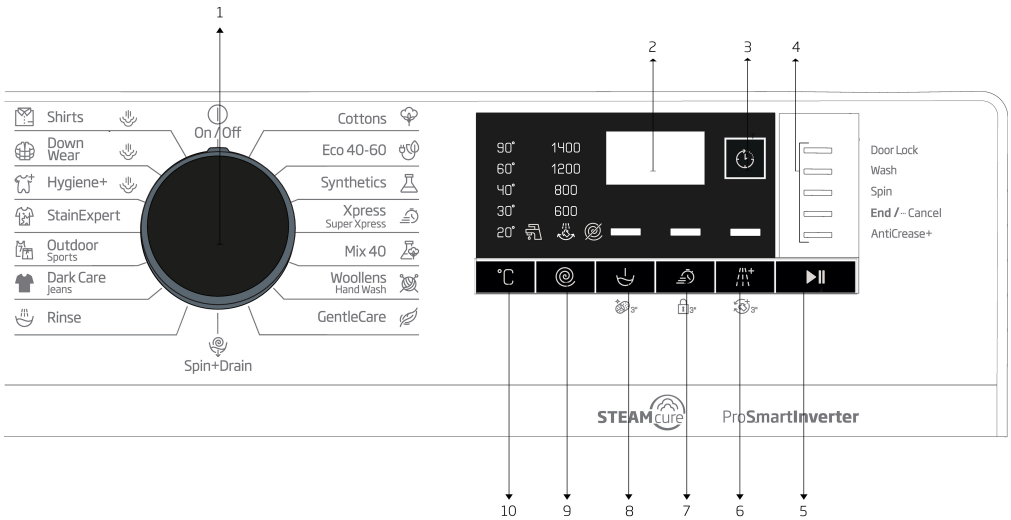
4.2.8 Displayed Program Time

You can see the programme duration on the display of your machine while selecting a programme. Depending on the amount of laundry you have loaded into your machine, foaming, unbalanced load conditions, fluctuations in power supply, water pressure and program settings, the programme duration is automatically adjusted while the programme is running.

SPECIAL CASE: At programme start of Cottons and Cotton Eco programmes, display shows the duration of half load, which is the most common use case. After programme starts, in 20-25 minutes actual load is detected by the machine. And if the detected load is higher than half load; washing program will be adjusted accordingly and program duration increased automatically. You may follow this change on the display.

4.3 Operating the product

4.3.1 Control panel



- 1 - Programme Selection Knob (Uppermost position On / Off)
- 2 - Display
- 3 - End Time Adjustment Button
- 4 - Programme Follow-up Indicator
- 5 - Start/Pause Button

- 6 - Auxiliary Function Button 3
- 7 - Auxiliary Function Button 2
- 8 - Auxiliary Function Button 1
- 9 - Spin Speed Adjustment Button
- 10 - Temperature Adjustment Button

4.3.2 Preparing the machine

1. Make sure that the hoses are connected tightly.
2. Plug in your machine.
3. Turn the tap on completely.
4. Place the laundry in the machine.
5. Add detergent and fabric softener.

4.3.3 Programme selection and tips for efficient washing

1. Select the programme suitable for the type, quantity and soiling degree of the laundry in accordance with the "Programme and consumption table" and the temperature table below.
2. Use the Programme Selection knob to select the desired programme.

4.3.4 Programme and consumption table

EN	Programme	Max. Load (kg)	Water Consumption (l)	Energy Consumption (kWh)	Auxiliary functions					Selectable temperature range °C
					Max. Speed	Prewash	Fast+	Extra rinse	Anti-Crease+	
Cottons	90	7	92	2,25	1400	•	•	•	•	Cold - 90
	60	7	92	1,70	1400	•	•	•	•	Cold - 90
	40	7	89	1,05	1400	•	•	•	•	Cold - 90
Eco 40-60	40 ***	7	52,0	0,990	1400					40-60
	40 ***	3,5	44,0	0,600	1400					40-60
	40 ***	2	36,0	0,340	1400					40-60
Synthetics	60	3	65	1,20	1200	•	•	•	•	Cold - 60
	40	3	63	0,75	1200	•	•	•	•	Cold - 60
Xpress / Super Short	90	7	62	2,00	1400		•	•	•	Cold - 90
	60	7	62	1,10	1400		•	•	•	Cold - 90
	30	7	60	0,20	1400		•	•	•	Cold - 90
Xpress / Super Short + Fast	30	2	41	0,15	1400		•	•	•	Cold - 30
Mixt 40	40	3	65	0,75	800	•	•		•	Cold - 40
Woolens / Hand Wash	40	1,5	55	0,55	1200			•		Cold - 40
Gentlecare	30	3	51	0,65	800			•		Cold - 40
Dark care / Jeans	40	2,5	82	0,85	1200	•	•	*	•	Cold - 40
Outdoor / Sports	40	3	44	0,45	1200	•				Cold - 40
Stain Expert	30	3,5	70	1,50	1400	•	•			30 - 60
Hygiene+ + Steam	90	7	129	2,80	1400			*		40-90
Down Wear + Steam	60	1,5	75	1,75	800			•		40-60
Shirts + Steam	60	3	62	1,70	800	•	•	•	•	40-60
Drum Clean + Steam	90	-	76	2,40	600					90

• : Selectable

* : Automatically selected, cannot be cancelled.

***: Eco 40-60 with 40 °C temperature selection is the test programme in accordance with EN 60456:2016/prA:2019 and energy label with Commission Delegated Regulation (EU) 2019/2014

- : See the programme description for maximum load.



INFORMATION

- Water and power consumption may vary subject to the changes in water pressure, water hardness and water temperature, ambient temperature, type and amount of laundry, selection of auxiliary functions and spin speed, and changes in the mains voltage.
- When selecting a programme, you can see the washing duration on the display of your machine. Depending on the amount of laundry you have loaded into the machine, there might be a difference of 1 to 1.5 hours between the duration shown on the display and the actual duration of the washing programme. The duration will be corrected automatically right after the washing programme has started.
- The auxiliary functions in the table may vary according to the model of your machine.
- Auxiliary function selection modes can be changed by the manufacturing company. Existing selection modes can be removed or new selection modes can be added.
- Always select the lowest appropriate temperature. The most efficient programmes in terms of energy consumption are generally those that perform at lower temperatures and longer duration.
- Noise and remaining moisture content are influenced by the spinning speed: the higher the spinning speed in the spinning phase, the higher the noise and the lower the remaining moisture content.

4.3.5 Main programmes

Depending on the type of fabric, use the following main programmes.

Consumption Values (EN)								
	Temperature selection (°C)	Spin Speed (rpm)	Capacity (kg)	Program Duration (h:mm)	Energy Consumption(kWh/cycle)	Water Consumption(L/cycle)	Laundry Temperature (°C)	Remaining Moisture Content (%)
Eco 40-60	40	1400	7,0	03:27	0,990	52,0	41	53
	40	1400	3,5	02:41	0,600	44,0	39	53
	40	1400	2	02:41	0,340	36,0	25	53
Cottons	20	1400	7	03:35	0,700	89,0	20	53
Cottons	60	1400	7	03:35	1,700	92,0	60	53
Synthetics	40	1200	3	02:15	0,750	63,0	40	40
Express / Super Xpress	30	1400	7	00:28	0,200	60,0	23	62

Symbols Table

• Cottons

You can wash your durable cotton laundry (sheets, bedlinen, towels, bathrobes, underwear etc.) in this programme. When you press the quick wash function key, programme duration becomes notably shorter but effective washing is ensured thanks to intense washing movements. If the quick wash function is not selected, superior washing and rinsing performance is ensured for your heavily soiled laundry.

• Synthetics

You can use this programme to wash t-shirts, synthetic/cotton mix fabrics etc. Programme duration is notably shorter and efficient washing performance is ensured. If the quick wash function is not selected, superior washing and rinsing performance is ensured for your heavily soiled laundry.

• Woollens / Hand Wash

Use this programme to wash your woollen/delicate clothes. Select the appropriate temperature complying with the tag of your clothes. Your laundry will be washed with very delicate movements to avoid any damage.

4.3.6 Additional programmes

For special cases, additional programmes are available in the machine.



INFORMATION

Additional programmes may differ according to the model of the machine.

• Eco 40-60

The eco 40-60 programme is able to clean normally soiled cotton laundry declared to be washable at 40 °C or 60 °C, together in the same cycle, and that this programme is used to assess the compliance with the EU ecodesign legislation.

Although it washes longer than all other programmes, it provides high energy and water savings. Actual water temperature may be different from the stated wash temperature. When you load the machine with less laundry (e.g. ½ capacity or less), periods in programme stages may automatically get shorter. In this case, energy and water consumption will decrease.

• Hygiene+ Steam

Applying a steam step at the beginning of the programme allows to soften the dirt easily.

Use this programme for your laundry (baby clothes, bed sheets, bedlinen, underwear, etc. cotton items) for which you require an anti-allergic and hygienic washing at high temperature with intensive and long washing cycle. The high level of hygiene is ensured thanks to the steam application before the programme, long heating duration and additional rinsing step.

- Programme was tested by “The British Allergy Foundation” (Allergy UK) with the 60°C temperature option selected and it was certified in terms of its efficacy in eliminating allergens in addition to bacteria and mould.



Allergy UK is the trademark of the British Allergy Foundation. The Seal of Approval has been designed to provide guidance to persons who want information whether the product significantly decreases the amount of allergens in the environment it is installed or whether it limits/reduces/eliminates the allergens. Its purpose is to provide evidence that the products have been tested scientifically or reviewed to provide measurable results.

• Gentlecare

You can use this programme to wash delicate laundry such as cotton/synthetic mix knitted clothes or socks. Washing movements in this programme are more delicate. Set the temperature to 20 degrees or use the Cold Wash option for clothes whose colour you wish to preserve.

• Xpress / Super Short

Use this programme to wash your lightly soiled cotton clothes in a short time. The programme duration can be reduced down to 14 minutes when the quick wash function is selected. When the quick wash function is selected, maximum 2 (two) kg of laundry must be washed.

• Dark Care / Jeans

Use this programme to preserve the colour of your dark-coloured clothes and jeans. This programme provides high efficiency in washing, thanks to a special drum movement, even at low temperatures. It is recommended to use liquid detergent or woollen shampoo for dark coloured laundry. Do not wash your delicate clothes that contain wool etc. in this programme.

• Mix 40

You can use this programme to wash cottons and synthetics together without the need to sort them.

• Shirts

This programme is used to wash the shirts made from cotton, synthetic and synthetic blended fabrics altogether. It reduces wrinkles. Steam is applied at the end of the programme to help the wrinkle reducing function. The special spin profile and steam applied at the end of the programme reduce the wrinkles on your shirts. When the quick wash function is selected, the Pre-treatment algorithm is executed.

- Apply the pre-treatment chemical on your garments directly or add it together with detergent when the machine starts to take water from the main washing compartment. Thus, you can obtain the same performance as you obtain with normal washing in a much shorter period of time. Usage life of your shirts increases.

• Outdoor / Sports

Use this programme to wash outdoor/sports clothes that contain cotton/synthetic mix, as well as waterproof cloths like gore-tex. This programme washes your laundry delicately thanks to its special turning movements.

• Down Wear

Use this programme to wash your fibre duvets that bear "machine washable" tag. Check that you have loaded the duvet correctly in order not to damage the machine and the duvet. Remove the duvet cover before loading the duvet into the machine. Fold the duvet into two and load it into the machine. Load the duvet into the machine paying attention to place it in a way that it will not contact the bellow or the glass.

Steam is applied at the end of the programme to soften bulky laundry such as towels.



INFORMATION

- Do not load the machine with more than a double fibre duvet (200 x 200 cm).
- Do not wash your cotton duvets, pillows etc. in the machine.



CAUTION!

- Do not use the washing machine to wash materials such as carpets, rugs etc. Otherwise, permanent damage will occur to the machine.

• StainExpert

Your washing machine has a special stain programme ensuring that different types of stains are removed in the most efficient way. Use this programme only to use durable, colourfast cottons. Do not wash delicate or non-colourfast clothes in this programme. You should check the tags of clothing before washing (recommended for shirts, trousers, shorts, t-shirts, baby clothes, pyjamas, aprons, table cloths, bedding, duvet covers, sheets, bath/brach towels, regular towels, socks, and cotton underwear suitable for long washing cycles at a high temperature). With the auto stain programme, you can remove 24 types of stains grouped into two categories according to quick function selection. Here you can see the stain groups based on quick function selection.

Below you will find the stain groups based on the quick function.

When the quick function is selected:		When the quick function is not selected:	
Blood	Fruit juice	Butter	Food
Chocolate	Ketchup	Grass	Mayonnaise
Pudding	Red Wine	Mud	Salad Dressing
Egg	Curry	Coke	Make-up
Tea	Jam	Sweat	Machine Oil
Coffee	Coal	Collar Soil	Baby food

- Select the stain programme.
- In the stain groups stated above, find the type of stain you want to remove and select the quick auxiliary function selection key to select the relevant group.
- Carefully read the tag of the clothing and make sure that the temperature and spin speed selected are suitable.

4.3.7 Special programmes

For specific applications, select any of the following programmes.

• Rinse

Use when you want to rinse or starch separately.

• Spin+Drain

Use this programme to remove the water on the clothes/in the machine.

Before selecting this programme, select the desired spin speed and press Start/Pause button. First, the machine will drain the water inside of it. Then, it will spin the laundry at the selected spin speed, and drain the water coming off of the laundry.

If you only want to drain the water without spinning the laundry, select the "Spin+Pump programme, and use the Spin Speed Adjustment button to select the No Spin function. Press the Start/Pause button.



INFORMATION

- Use a lower spin speed for delicate laundries.

4.3.8 Temperature selection

Whenever a new programme is selected, the recommended temperature for the selected programme appears on the temperature indicator.

To decrease the temperature, press the Temperature Adjustment button. Temperature will decrease gradually. When the cold level is selected, temperature level lights will not be on.



INFORMATION

- If the programme has not reached the heating step, you can change the temperature without switching the machine to Pause mode.

4.3.9 Spin speed selection

Whenever a new programme is selected, the recommended spin speed of the selected programme is displayed on the spin speed indicator.

To decrease the spin speed, press the Spin Speed Adjustment button. Spin speed decreases gradually. Then, depending on the model of the product, "Rinse Hold" and "No Spin" options appear on the display. When the "No Spin" function is selected, rinse level indicator lights will not be on.

Rinse hold

If you are not going to unload your clothes immediately after the programme ends, you can use rinse hold function to keep your laundry in the final rinsing water in order to prevent them from getting wrinkled when there is no water in the machine. Press Start/Pause button after this process if you want to drain the water without spinning your laundry. Programme will resume where it left off, drain the water and then it will be complete.

If you want to spin the laundry held in water, adjust the Spin Speed and press Start/Pause button. Programme will resume. Water will be drained, laundry will be spun and the programme will end.



INFORMATION

- If the programme has not reached the spin step, you can change the spin speed without switching the machine to Pause mode.

4.3.10 Auxiliary function selection

Select the desired auxiliary functions before starting the programme. You can also select or cancel auxiliary functions suitable for the running programme without pressing the Start/Pause button while the machine is operating. To do this, the machine must be in a step before the auxiliary function you are going to select or cancel. If the auxiliary function cannot be selected or cancelled, light of the relevant function will flash 3 times to warn the user.



INFORMATION

- If a second auxiliary function conflicting with the first one is selected before starting the machine, the function selected first will be cancelled and the second auxiliary function selection will remain active.
- An auxiliary function which is not compatible with the programme cannot be selected. (See "Programme and consumption table")
- Auxiliary Function buttons may vary according to the model of the machine.

4.3.10.1 Auxiliary functions

• Prewash

A Prewash is only worthwhile for heavily soiled laundry. Not using the Prewash will save energy, water, detergent and time.



INFORMATION

- Prewash without detergent is recommended for tulle and curtains.

• Fast+

When this function is selected, durations of relevant programmes get shorter by 50%.

Thanks to the optimised washing steps, high mechanic activity and optimum water consumption, high washing performance is achieved in spite of the reduced duration.

• Extra Rinse

This function enables the machine to carry out another rinsing cycle in addition to the one carried out after the main wash. Thus, the risk for sensitive skins (babies, allergic skins, etc.) to be effected by the minimal detergent remnants on the laundry can be reduced.

4.3.10.2 Functions/Programmes Selected by Pressing the Function Buttons for 3 Seconds



• Drum Clean

To select this programme, press and hold the auxiliary function button 1 for 3 seconds.

Use it regularly (every 1-2 months) to clean the drum and ensure the required hygiene is provided. Run the programme while the machine is totally empty. To obtain better results, put powder lime-scale remover for washing machines into the detergent compartment no. "2". When the programme is over, leave the loading door ajar so that the inside of the machine gets dry.



INFORMATION

- This is not a washing programme. It is a maintenance programme.
- Do not run this programme when there are any objects in the machine. If you try to do so, the machine will automatically detect that there is load inside and abort the programme.

• Child Lock

You can prevent children from tampering with the machine by using the Child Lock feature. Thus you can avoid any changes in a running programme.



INFORMATION

- If the Programme Selection knob is turned when the Child Lock is enabled, "Con" appears on the display. While the Child Lock is enabled, you cannot make any change in the programmes, the selected temperature, the speed or the auxiliary functions.
- Even if another programme is selected with the Programme Selection knob while the Child Lock is enabled, previously selected programme will continue running.

To enable Child Lock:

Press and hold the Auxiliary Function button 2 for 3 seconds. While you're holding the button pressed for 3 seconds, C03, C02 and C01 will be displayed respectively. Then, "Con" will be displayed to warn the user that child lock is enabled. If you press any button or turn the Programme Selection knob while the Child Lock is enabled, the same warning will be displayed.

To disable Child Lock:

Press and hold the Auxiliary Function button 2 for 3 seconds while the programme is running. While you're holding the button pressed for 3 seconds, C03, C02 and C01 will be displayed respectively. Then, "COF" will be displayed to warn the user that child lock is disabled.



INFORMATION

- In addition to the method above, to deactivate the Child Lock, switch the Programme Selection knob to On/Off position when no programme is running, and select another programme.
- Child Lock will not be disabled after a power failure or unplugging.

• AntiCrease+

If you press and hold the auxiliary function button 3 for 3 seconds, this function will be selected and the programme follow-up light of the relevant programme will turn on. When this function is selected, the drum will rotate for up to eight hours to ensure that the clothes do not crease at the end of the programme. At any time during these eight hours, you can cancel the programme and unload the machine. Just press any button or turn the programme selection knob to end the function. The programme follow-up light will remain on even if you end the function by pressing any button. If you end the function by turning the programme selection knob, the programme follow-up light will remain on or go off depending on the selected programme. If you do not cancel the function by pressing the Auxiliary Function button 3 for 3 seconds, it will be used in the next washing cycles as well.

4.3.11 End Time Adjustment

The End Time Adjustment function allows you to set the end time of the programme up to 19 hours. You can increase this time by 1-hour intervals.



INFORMATION

- Please do not use liquid detergent if you have selected the End Time Adjustment function. Stains might remain on the clothes.

1. Open the loading door, place the laundry and add detergent, etc.
2. Select the washing programme, temperature, spin speed and, if required, the auxiliary functions.
3. Press the End Time Adjustment button and select the desired time.
4. Press the Start/Pause button. The delayed end time you have set will be displayed. Countdown will start for delayed end. On the display, “_” will move up and down next to the delayed end time.



INFORMATION

- If the programme has not started, you can add laundry into the machine during the delayed end time.

5. At the end of the countdown, duration of the selected programme will be displayed. “_” will disappear and the selected programme will start.

Changing the delayed end time

If you want to change the time during countdown: Turn the programme selection knob to cancel the delayed end time function, and then set the desired time again.

1. Press the End Time Adjustment button. When pressed for the first time, the programme duration will be rounded up to the closest whole number time. Each following press will increase the time by an hour.
2. If you want to decrease the delayed end time, press the End Time Adjustment button consecutively until the desired time is displayed.

Cancelling the delayed end function

If you want to cancel the delayed end time countdown and start the programme immediately:

1. Set the Programme Selection knob to any programme. This way, the Delayed End time will be cancelled. The End/Cancel light will flash continuously.
2. Then, select the programme you want to run again.
3. Press Start/Pause button to start the programme.

4.3.12 Starting the programme

1. Press Start/Pause button to start the programme.
2. Programme follow-up light showing the startup of the programme will turn on.



INFORMATION

- If no programme is started or no key is pressed within 10 minutes during the programme selection process, the display lights will go off. Once the Programme Selection knob is turned or any button is pressed, display lights will turn on again.

4.3.13 Progress of programme

Progress of a running programme can be followed from the Programme Follow-up indicator. At the beginning of each programme step, the relevant indicator light will turn on.



INFORMATION

- If the “Anti-crease+” auxiliary function has been selected, “End” LED and “Anti-crease+” LED will be on at the same time while this step is continuing.
- To end the programme while the “Anti-crease+” step is running, simply press any button or turn the programme selection knob.

You can change the auxiliary functions, speed and temperature settings without stopping the programme flow while the programme is running. To do this, the change you are going to make must be something that will be carried out after the programme step that is running. If the change is not suitable, relevant lights will flash 3 times.



INFORMATION

- If the machine does not proceed to the spinning step, the Rinse Hold function might be active or the automatic unbalanced load detection system might be activated due to the unbalanced distribution of the laundry in the machine.

4.3.14 Loading door lock

There is a locking system on the loading door of the machine that prevents opening of the loading door in cases when the water level is unsuitable.

Loading door light will start flashing when the machine is switched to Pause mode. The machine checks the level of the water inside. If the level is suitable, the loading door light will turn off and the loading door can be opened within 1-2 minutes.

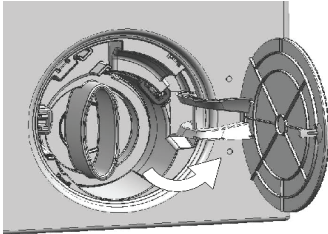
If the level is unsuitable, the loading door light will remain on and the loading door cannot be opened. If you are obliged to open the loading door while the Loading Door light is on, you must cancel the current programme. See "Cancelling the programme"

Opening the loading door in case of power failure:

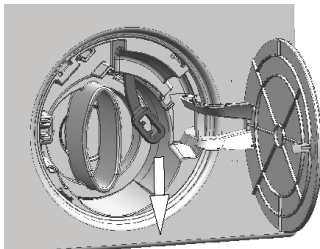


WARNING!

- Before opening the loading door, make sure that there is no water in the machine to avoid flooding. Water may be hot and could cause scalding.



- Turn off and unplug the appliance.
- Open the pump filter lid.



- Remove the loading door emergency handle behind the filter cover with a tool.
- Open the loading door by pulling the loading door emergency handle downwards.
- Try to pull the handle downwards again if the loading door is not opened.
- Bring the loading door emergency handle to its original position after opening the loading door.

4.3.15 Changing the selections after programme has started

Switching the machine to pause mode

Press the Start/Pause to switch the machine to pause mode while a programme is running. The light of the current programme will flash on the Programme Follow-up indicator, indicating that the machine has switched to pause mode.

Also, when the loading door is ready to be opened, the Loading Door light will turn off in addition to the programme step light.

Changing the auxiliary function, speed and temperature

Depending on the step the programme has reached, you can cancel or select auxiliary functions. See "Auxiliary function selection".

You can also change the speed and temperature settings. See "Spin speed selection" and "Temperature selection".



INFORMATION

- If no change is allowed, the relevant light will flash 3 times.

Adding and removing laundry

1. Press the "Start/Pause" button to pause the machine. The programme follow-up light of the relevant step during which the machine was switched into the pause mode will flash.
2. Wait until the Loading Door can be opened.
3. Open the loading door and add or take out laundry.
4. Close the loading door.
5. Make changes in auxiliary functions, temperature and speed settings if necessary.
6. Press the "Start/Pause" button to start the machine.

4.3.16 Cancelling the programme

To cancel the programme, turn the Programme Selection knob to select another programme. Previous programme will be cancelled. End/Cancel light will flash continuously to notify that the programme has been cancelled.

When you turn the Programme Selection knob, the machine will end the programme but will not discharge the water inside. When you select and start a new programme, the newly selected programme will start depending on the step the previous programme was cancelled in. For example, the machine may take in additional water or continue to wash with the water inside.



INFORMATION

- Depending on the step where the programme was cancelled in, you may have to add detergent and softener again for the programme you have selected anew.

4.3.17 End of programme

At the end of the programme, "End" will be displayed.

1. Wait until the light of the loading door goes off completely.
2. Switch the programme selection knob to On/Off to switch off the machine.
3. Take out your laundry and close the loading door. Your machine is now ready for the next washing cycle.

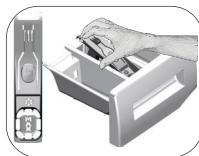
4.3.18 Your machine has the "Pause Mode" function.

After using the On/Off button to switch on the machine, if you do not start any programme in the selection step or do not perform anything else, or if you do not do anything in 10 minutes after the selected programme has ended, the machine will automatically switch to energy saving mode. Also, if your product has a display that shows programme time, this display will completely turn off. If you turn the Programme Selection knob or touch any button, the lights and the display will switch back to the previous position. The selections you make when exiting the energy efficiency mode may change. Check if your selections are correct before starting the programme. If necessary, make adjustments again. This is not an error.

4.4 Maintenance and cleaning

Service life of product extends and frequently experienced problems will be reduced if it is cleaned at regular intervals.

4.4.1 Cleaning the detergent drawer



Clean the detergent drawer at regular intervals (every 4-5 washing cycles) as shown below in order to prevent accumulation of powder detergent in time.

Lift the rear part of the siphon to remove it as illustrated.

If more than normal amount of water and softener mixture starts to gather in the softener compartment, the siphon must be cleaned.

- 1 Press the dotted point on the siphon in the softener compartment and pull towards you until the compartment is removed from the machine.
2. Wash the detergent drawer and the siphon with plenty of lukewarm water in a washbasin. In order to prevent the residues to contact your skin, clean it with an appropriate brush by wearing a pair of gloves.
- 3 Insert the drawer back into its place after cleaning and make sure that it is seated well.

4.4.2 Cleaning the loading door and the drum

For products with drum cleaning programme, please see Operating the product - Programmes.



Repeat Drum Cleaning process in every 2 months.

Use an detergent / anti-limescale suitable for the washing machines.



After every washing make sure that no foreign substance is left in the drum.

If the holes on the bellow shown in the figure is blocked, open the holes using a toothpick.

Foreign metal substances will cause rust stains in the drum. Clean the stains on the drum surface by using cleaning agents for stainless steel.

Never use steel wool or wire wool. These will damage the painted, chromated and plastic surfaces.

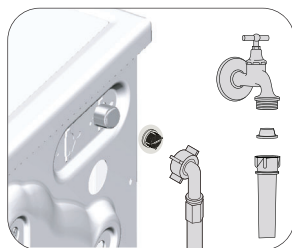
4.4.3 Cleaning the body and control panel

Wipe the body of the machine with soapy water or non-corrosive mild gel detergents as necessary, and dry with a soft cloth.

Use only a soft and damp cloth to clean the control panel.

4.4.4 Cleaning the water intake filters

There is a filter at the end of each water intake valve at the rear of the machine and also at the end of each water intake hose where they are connected to the tap. These filters prevent foreign substances and dirt in the water to enter the washing machine. Filters should be cleaned as they do get dirty.



1. Close the taps.
2. Remove the nuts of the water intake hoses to access the filters on the water intake valves. Clean them with an appropriate brush. If the filters are too dirty, remove them from their places with a pliers and clean in this way.
3. Take out the filters on the flat ends of the water intake hoses together with the gaskets and clean thoroughly under running water.
4. Replace the seals and filters carefully and tighten their nuts by hand.

4.4.5 Draining remaining water and cleaning the pump filter

The filter system in your machine prevents solid items such as buttons, coins and fabric fibers clogging the pump impeller during discharge of washing water. Thus, the water will be discharged without any problem and the service life of the pump will extend.

If the machine fails to drain water, the pump filter is clogged. Filter must be cleaned whenever it is clogged or in every 3 months. Water must be drained off first to clean the pump filter.

In addition, prior to transporting the machine (e.g., when moving to another house) and in case of freezing of the water, water may have to be drained completely.



CAUTION: Foreign substances left in the pump filter may damage your machine or may cause noise problem.

CAUTION: If the product is not being used, shut the tap shut, remove mains pipe and drain the water inside the machine against any likely freezing.

CAUTION: After each use, turn off the water tap to which the mains hose is connected.

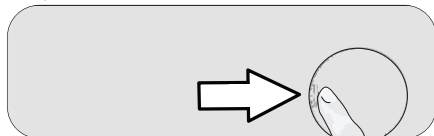
In order to clean the dirty filter and discharge the water:

1 Unplug the machine to cut off the supply power.



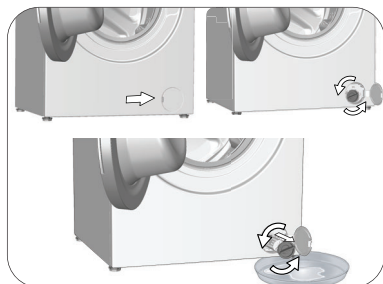
CAUTION: Temperature of the water inside the machine may rise up to 90 °C. To avoid the burning risk, clean the filter after the water inside the machine is cooled down.

2. Open the filter cover.



3 Follow the below procedures in order to drain water.

The product does not have an emergency water drain hose, in order to drain the water:



- In order to collect the water to flow out of the filter, place a large vessel in front of the filter.
- Turn and loosen the pump filter until water starts to flow (counterclockwise). Fill the flowing water into the container you have placed in front of the filter. Always keep a piece of cloth handy to absorb any spilled water.
- When the water inside the machine is finished, take out the filter completely by turning it.

4. Clean any residues inside the filter as well as fibers, if any, around the pump impeller region.

5. Replace the filter.


6. If the filter cap is composed of two pieces, close the filter cap by pressing on the tab. If it is one piece, seat the tabs in the lower part into their places first, and then press the upper part to close.

5 Troubleshooting

Problem	Reason	Solution
Program does not start after closing the door.	Start / Pause / Cancel button was not pressed.	<ul style="list-style-type: none"> • *Press the Start / Pause / Cancel button.
	It may be difficult to close the loading door in case of excessive loading.	<ul style="list-style-type: none"> • Reduce the amount of laundry and make sure that the loading door is closed properly.
Programme cannot be started or selected.	Washing machine has switched to self protection mode due to a supply problem (line voltage, water pressure, etc.).	<ul style="list-style-type: none"> • To cancel the programme, turn the Programme Selection knob to select another programme. Previous programme will be canceled. (see. "Cancellation of program")
Water in the machine.	Some water might have remained in the product due to the quality control processes in the production.	<ul style="list-style-type: none"> • This is not a failure; water is not harmful to the machine.
The machine enters standby mode after the programme starts or it does not take in water.	Tap is turned off.	<ul style="list-style-type: none"> • Turn on the taps.
	Water inlet hose is bent.	<ul style="list-style-type: none"> • Flatten the hose.
	Water inlet filter is clogged.	<ul style="list-style-type: none"> • Clean the filter.
	Loading door may be open.	<ul style="list-style-type: none"> • Close the door.
	The water connection may be wrong or water may be cut off (When the water is cut off, washing or rinsing LEDs flash).	<ul style="list-style-type: none"> • Check the water connection. If the water is cut off, press the Start/Pause key after the water has been supplied again to resume the operation from standby mode.
Machine does not drain water.	Water drain hose might be clogged or twisted.	<ul style="list-style-type: none"> • Clean or flatten the hose.
	Pump filter is clogged.	<ul style="list-style-type: none"> • Clean the pump filter.
Machine vibrates or makes noise.	Machine might be standing unbalanced.	<ul style="list-style-type: none"> • Adjust the feet to level the machine.
	A hard substance might have entered into the pump filter.	<ul style="list-style-type: none"> • Clean the pump filter.
	Transportation safety bolts are not removed.	<ul style="list-style-type: none"> • Remove the transportation safety bolts.
	Laundry quantity in the machine might be too little.	<ul style="list-style-type: none"> • Add more laundry to the machine.
Machine might be overloaded with laundry.	Machine might be overloaded with laundry.	<ul style="list-style-type: none"> • Take out some of the laundry from the machine or distribute the load by hand to balance it homogeneously in the machine.
	Machine might be leaning on a rigid item.	<ul style="list-style-type: none"> • Make sure that the machine is not leaning on anything.
There is water leaking from the bottom of the washing machine.	Water drain hose might be clogged or twisted.	<ul style="list-style-type: none"> • Clean or flatten the hose.
	Pump filter is clogged.	<ul style="list-style-type: none"> • Clean the pump filter.
Machine stopped shortly after the programme started.	Machine might have stopped temporarily due to low voltage.	<ul style="list-style-type: none"> • It will resume running when the voltage restores to the normal level.
Machine directly discharges the water it takes in.	Draining hose might not be at adequate height.	<ul style="list-style-type: none"> • Connect the water draining hose as described in the operation manual.
No water can be seen in the machine during washing.	The water level is not visible from outside of the washing machine.	<ul style="list-style-type: none"> • This is not a failure.
Loading door cannot be opened.	Door lock is activated because of the water level in the machine.	<ul style="list-style-type: none"> • Drain the water by running the Pump or Spin programme.
	Machine is heating up the water or it is at the spinning cycle.	<ul style="list-style-type: none"> • Wait until the programme completes.
	Child lock is engaged. Door lock will be deactivated a couple of minutes after the programme has come to an end.	<ul style="list-style-type: none"> • Wait for a couple of minutes for deactivation of the door lock.
	Loading door may be stuck because of the pressure it is subjected to.	<ul style="list-style-type: none"> • Grab the handle and push and pull the loading door to release and open it.
Washing takes longer time than specified in the manual.(*)	Water pressure is low.	<ul style="list-style-type: none"> • Machine waits until taking in adequate amount of water to prevent poor washing quality due to the decreased amount of water. Therefore, the washing time extends.
	Voltage might be low.	<ul style="list-style-type: none"> • Washing time is prolonged to avoid poor washing results when the supply voltage is low.
	Input temperature of water might be low.	<ul style="list-style-type: none"> • Required time to heat up the water extends in cold seasons. Also, washing time can be lengthened to avoid poor washing results.
	Number of rinses and/or amount of rinse water might have increased.	<ul style="list-style-type: none"> • Machine increases the amount of rinse water when good rinsing is needed and adds an extra rinsing step if necessary.
	Excessive foam might have occurred and automatic foam absorption system might have been activated due to too much detergent usage.	<ul style="list-style-type: none"> • Use recommended amount of detergent.

Problem	Reason	Solution
Programme time does not countdown. (On models with display) (*)	Timer may stop during water intake.	<ul style="list-style-type: none"> • Timer indicator will not countdown until the machine takes in adequate amount of water. The machine will wait until there is sufficient amount of water to avoid poor washing results due to lack of water. Timer indicator will resume countdown after this.
	Timer may stop during heating step.	<ul style="list-style-type: none"> • Timer indicator will not countdown until the machine reaches the selected temperature.
	Timer may stop during spinning step.	<ul style="list-style-type: none"> • Automatic unbalanced load detection system might be activated due to the unbalanced distribution of the laundry in the drum.
Programme time does not countdown. (*)	There might be unbalanced load in the machine.	<ul style="list-style-type: none"> • Automatic unbalanced load detection system might be activated due to the unbalanced distribution of the laundry in the drum.
Machine does not switch to spinning step. (*)	There might be unbalanced load in the machine.	<ul style="list-style-type: none"> • Automatic unbalanced load detection system might be activated due to the unbalanced distribution of the laundry in the drum.
	The machine will not spin if water is not drained completely.	<ul style="list-style-type: none"> • Check the filter and the draining hose.
	Excessive foam might have occurred and automatic foam absorption system might have been activated due to too much detergent usage.	<ul style="list-style-type: none"> • Use recommended amount of detergent.
Washing performance is poor: Laundry turns gray. (**)	Insufficient amount of detergent has been used over a long period of time.	<ul style="list-style-type: none"> • Use the recommended amount of detergent appropriate for water hardness and the laundry.
	Washing was made at low temperatures for a long time.	<ul style="list-style-type: none"> • Select the proper temperature for the laundry to be washed.
	Insufficient amount of detergent is used with hard water.	<ul style="list-style-type: none"> • Using insufficient amount of detergent with hard water causes the soil to stick on the cloth and this turns the cloth into gray in time. It is difficult to eliminate graying once it happens. Use the recommended amount of detergent appropriate for water hardness and the laundry.
	Too much detergent is used.	<ul style="list-style-type: none"> • Use the recommended amount of detergent appropriate for water hardness and the laundry.
Washing performance is poor: Stains persist or the laundry is not whitened. (**)	Insufficient amount of detergent is used.	<ul style="list-style-type: none"> • Use the recommended amount of detergent appropriate for water hardness and the laundry.
	Excessive laundry was loaded in.	<ul style="list-style-type: none"> • Do not load the machine in excess. Load with amounts recommended in the "Programme and consumption table".
	Wrong programme and temperature were selected.	<ul style="list-style-type: none"> • Select the proper programme and temperature for the laundry to be washed.
	Wrong type of detergent is used.	<ul style="list-style-type: none"> • Use original detergent appropriate for the machine.
	Too much detergent is used.	<ul style="list-style-type: none"> • Put the detergent in the correct compartment. Do not mix the bleaching agent and the detergent with each other.
Washing performance is poor: Oily stains appeared on the laundry. (**)	Regular drum cleaning is not applied.	<ul style="list-style-type: none"> • Clean the drum regularly. For this, please see 4.4.2.
Washing performance is poor: Clothes smell unpleasantly. (**)	Odours and bacteria layers are formed on the drum as a result of continuous washing at lower temperatures and/or in short programmes.	<ul style="list-style-type: none"> • Leave the detergent drawer as well as the loading door of the machine ajar after each washing. Thus, a humid environment favorable for bacteria cannot occur in the machine.
Colour of the clothes faded. (**)	Excessive laundry was loaded in.	<ul style="list-style-type: none"> • Do not load the machine in excess.
	Detergent in use is damp.	<ul style="list-style-type: none"> • Keep detergents closed in an environment free of humidity and do not expose them to excessive temperatures.
	A higher temperature is selected.	<ul style="list-style-type: none"> • Select the proper programme and temperature according to the type and soiling degree of the laundry.

Problem	Reason	Solution
It does not rinse well.	The amount, brand and storage conditions of the detergent used are inappropriate.	<ul style="list-style-type: none"> Use a detergent appropriate for the washing machine and your laundry. Keep detergents closed in an environment free of humidity and do not expose them to excessive temperatures.
	Detergent is put in the wrong compartment.	<ul style="list-style-type: none"> If detergent is put in the prewash compartment although prewash cycle is not selected, machine can take this detergent during rinsing or softener step. Put the detergent in the correct compartment.
	Pump filter is clogged. Drain hose is folded.	<ul style="list-style-type: none"> Check the filter. Check the drain hose.
Laundry became stiff after washing. (**)	Insufficient amount of detergent is used.	<ul style="list-style-type: none"> Using insufficient amount of detergent for the water hardness can cause the laundry to become stiff in time. Use appropriate amount of detergent according to the water hardness.
	Detergent is put in the wrong compartment.	<ul style="list-style-type: none"> If detergent is put in the prewash compartment although prewash cycle is not selected, machine can take this detergent during rinsing or softener step. Put the detergent in the correct compartment.
	Detergent might be mixed with the softener.	<ul style="list-style-type: none"> Do not mix the softener with detergent. Wash and clean the dispenser with hot water.
Laundry does not smell like the softener. (**)	Detergent is put in the wrong compartment.	<ul style="list-style-type: none"> If detergent is put in the prewash compartment although prewash cycle is not selected, machine can take this detergent during rinsing or softener step. Wash and clean the dispenser with hot water. Put the detergent in the correct compartment.
	Detergent might be mixed with the softener.	<ul style="list-style-type: none"> Do not mix the softener with detergent. Wash and clean the dispenser with hot water.
Detergent residue in the detergent drawer. (**)	Detergent is put in wet drawer.	<ul style="list-style-type: none"> Dry the detergent drawer before putting in detergent.
	Detergent has gotten damp.	<ul style="list-style-type: none"> Keep detergents closed in an environment free of humidity and do not expose them to excessive temperatures.
	Water pressure is low.	<ul style="list-style-type: none"> Check the water pressure.
	The detergent in the main wash compartment got wet while taking in the prewash water. Holes of the detergent compartment are blocked.	<ul style="list-style-type: none"> Check the holes and clean if they are clogged.
	There is a problem with the detergent drawer valves.	<ul style="list-style-type: none"> Call the Authorised Service Agent.
	Detergent might be mixed with the softener.	<ul style="list-style-type: none"> Do not mix the softener with detergent. Wash and clean the dispenser with hot water.
Too much foam forms in the machine. (**)	Regular drum cleaning is not applied.	<ul style="list-style-type: none"> Clean the drum regularly. For this, please see 4.4.2.
	Improper detergents for the washing machine are being used.	<ul style="list-style-type: none"> Use detergents appropriate for the washing machine.
	Excessive amount of detergent is used.	<ul style="list-style-type: none"> Use only sufficient amount of detergent.
	Detergent was stored under improper conditions.	<ul style="list-style-type: none"> Store detergent in a closed and dry location. Do not store in excessively hot places.
	Some meshed laundry such as tulle may foam too much because of their texture.	<ul style="list-style-type: none"> Use smaller amounts of detergent for this type of item.
	Detergent is put in the wrong compartment. Softener is being taken early.	<ul style="list-style-type: none"> Put the detergent in the correct compartment. There may be problem in the valves or in the detergent dispenser. Call the Authorised Service Agent.
Foam is overflowing from the detergent drawer.	Too much detergent is used.	<ul style="list-style-type: none"> Mix 1 tablespoonful softener and ½ l water and pour into the main wash compartment of the detergent drawer.
		<ul style="list-style-type: none"> Put detergent into the machine suitable for the programmes and maximum loads indicated in the "Programme and consumption table". When you use additional chemicals (stain removers, bleaches and etc), reduce the amount of detergent.
Laundry remains wet at the end of the programme. (*)	Excessive foam might have occurred and automatic foam absorption system might have been activated due to too much detergent usage.	<ul style="list-style-type: none"> Use recommended amount of detergent.

Problem	Reason	Solution
(*) Machine does not switch to spinning step when the laundry is not evenly distributed in the drum to prevent any damage to the machine and to its surrounding environment. Laundry should be rearranged and re-spun.		
(**) Regular drum cleaning is not applied. Clean the drum regularly. See 4.4.2		
	<p>CAUTION: If you cannot eliminate the problem although you follow the instructions in this section, consult your dealer or the Authorised Service Agent. Never try to repair a nonfunctional product yourself.</p>	

When the appliance is turned off, pressing 1 and 2 auxiliary function buttons are pressed for a long time, a 3-2-1 countdown, and the total washing cycles completed on the appliance is displayed.

After the total washing cycle is displayed, the failure codes, if any, are displayed. Check the information on the screen through the table below.

On-screen Information	Cause	Solution
Err	Safety algorithm is run on the appliance.	Wait for the writing to pass. After pressing the auxiliary function buttons 1 and 2, check the on-screen information.
SC	Your complaint is not solved during the check.	Call the authorised service agent.
E5	Pump filter may be clogged.	Clean the pump filter. See "Draining remaining water and cleaning the pump filter" section. Try in spin cycle. If the issue is not resolved, call the service.
E8	The machine may not be taking in water.	<ul style="list-style-type: none"> • Turn on the taps. • Make sure there is no water outage. • Check the water inlet hose connection, if there is any folding on the hose, straighten it. • Clean the pump filter. See "Draining remaining water and cleaning the pump filter" section. • Close the front cover of the machine. Make sure that the cover is locked. Run the machine one more time. If the issue is not resolved, call the service.
E29	The product has switched to self protection mode due to a supply problem (line voltage, water pressure, etc.).	To cancel the programme, turn the Programme Selection knob to select another programme. Previous programme will be cancelled. See "Cancelling the programme" section. If the issue persists, call the service.
E17	Excess foam is present in the machine after the completed cycle.	<ul style="list-style-type: none"> • Store detergent in a closed and dry location. Do not store in excessively hot places. • Use smaller amounts of detergent for porous laundry like tulle. • Use amount of detergent appropriate to the amount of laundry and the level of stain. • Use only sufficient amount of detergent. • Make sure you place the detergent in the appropriate compartment. • Run the Drum Cleaning programme with the machine empty. See "Drum Cleaning" programme If your machine does not include Drum Cleaning programme, you can use Cotton 90C. <ul style="list-style-type: none"> • After running a short programme without detergent, check the machine. If the issue persists, call the service.
E18	Spin cycle is not initiated due to an imbalance of the machine.	Check the laundry inside the machine. The amount of laundry may not be sufficient. Try by increasing the amount of laundry. The laundry may be causing an imbalance; sort out the laundry by hand and distribute evenly inside the appliance. Retry in spin cycle.
E12	There may be water inside the machine.	Unplug the machine. There may be water under the machine. Clean the water under the machine. Plug the machine again. Try running a short cycle. If the issue persists or you see water leaking from one of the hoses, close the valves and call the service.
E27	Check the water drain of the machine.	See "Connecting the drain hose to the drain" section.
E84	BLE connection cannot be established.	Check it, try connecting it. See "HomeWhiz Feature and Remote Control Function" section. If the issue persists, call the service.

DISCLAIMER / WARNING

Some (simple) failures can be adequately handled by the end-user without any safety issue or unsafe use arising, provided that they are carried out within the limits and in accordance with the following instructions (see the "Self-Repair" section).

Therefore, unless otherwise authorized in the "Self-Repair" section below, repairs shall be addressed to registered professional repairers in order to avoid safety issues. A registered professional repairer is a professional repairer that has been granted access to the instructions and spare parts list of this product by the manufacturer according to the methods described in legislative acts pursuant to

Directive 2009/125/EC. **However, only the service agent (i.e. authorized professional repairers)**

that you can reach through the phone number given in the user manual/warranty card or through your authorized dealer may provide service under the guarantee terms. Therefore, please be advised that repairs by professional repairers (who are not authorized by Beko) shall void the guarantee.

Self-Repair

Self-repair can be done by the end-user with regard to the following spare parts: door, door hinge and seals, other seals, door locking assembly and plastic peripherals such as detergent dispensers (an updated list is also available in support.beko.com as of 1st of March 2021).

Moreover, to ensure product safety and to prevent risk of serious injury, the mentioned self-repair shall be done following the instructions in the user manual for self-repair or which are available in support.beko.com. For your safety, unplug the product before attempting any self-repair.

Repair and repair attempts by end-users for parts not included in such list and/or not following the instructions in the user manuals for self-repair or which are available in support.beko.com, might give raise to safety issues not attributable to Beko, and will void the warranty of the product.

Therefore, it is highly recommended that end-users refrain from the attempt to carry out repairs falling outside the mentioned list of spare parts, contacting in such cases authorized professional repairers or registered professional repairers. On the contrary, such attempts by end-users may cause safety issues and damage the product and subsequently cause fire, flood, electrocution and serious personal injury to occur.

By way of example, but not limited to, the following repairs must be addressed to authorized professional repairers or registered professional repairers: motor, pump assembly, main board, motor board, display board, heaters etc.

The manufacturer/seller cannot be held liable in any case where end-users do not comply with the above..

The spare part availability of the washing machine or washer-dryer that you purchased is 10 years. During this period, original spare parts will be available to operate the washing machine or washer-dryer properly.



Mašina za pranje veša

Uputstvo za upotrebu



WUE 7722 XW0

SB



1 Opšta bezbednosna uputstva

Ovaj deo sadrži sigurnosna uputstva koja će vam pomoći da se zaštitite od opasnosti koje mogu dovesti do telesnih povreda ili materijalnih šteta. Garancija prestaje da važi ako se ne poštuju ova uputstva.

1.1 Lična i bezbednost svojine

- ▶ Nikad ne stavljajte proizvod na pod pokriven tepihom. U suprotnom može doći do pregrevanja električnih delova zbog nedostatka strujanja vazduha ispod mašine. To može da prouzrokuje probleme sa vašim proizvodom.
- ▶ Izvadite strujni utikač kada proizvod nije u upotrebi.
- ▶ Sve radove na instalaciji i popravci uvek prepustite ovlašćenom serviseru. Proizvođač neće biti odgovoran za oštećenja do kojih može da dođe kada takve radove obavljaju neovlašćena lica.
- ▶ Creva za dovod i ispuštanje vode uvek moraju da budu dobro učvršćena i neoštećena. U suprotnom postoji opasnost od curenja vode.
- ▶ Dok još uvek ima vode unutar proizvoda, nikada nemojte da otvarate vrata za ubacivanje ili da vadite filter. U suprotnom će postojati opasnost od poplave i povreda zbog vruće vode.
- ▶ Nikada nemojte na silu da otvarate zaključana vrata za punjenje veša. Vrata će se odmah otvoriti nakon što se završi ciklus pranja. Ako se vrata ne otvore, primenite rešenja koja su priložena za grešku „Loading door cannot be opened” (Vrata za ubacivanje veša se ne mogu otvoriti) u odeljku Rešavanje problema. U slučaju da se vrata za punjenje veša silom otvaraju može doći do oštećivanja vrata i mehanizma zaključavanja.
- ▶ Koristite samo deterdžente, omekšivače i dodatke koji se upotrebljavaju za mašinsko pranje.
- ▶ Pratite uputstva na etiketi odeće i pakovanju deterdženta.



Ovaj proizvod je proizveden koristeći najnoviju tehnologiju u ekološki čistim uslovima.

1.2 Bezbednost dece


- ▶ Ovaj proizvod mogu da koriste osmogodišnja deca, starija deca i ljudi čije telesne, senzorne ili mentalne sposobnosti nisu u potpunosti razvijene, kao i neiskusne i nevešte osobe samo pod nadzorom ili ako su dobili obuku o bezbednom korišćenju proizvoda i opasnostima koje donosi. Deca ne treba da se igraju ovim proizvodom. Čišćenje i održavanje nikad ne smeju obavljati deca, osim pod nečijim nadzorom. Deca mlađa od 3 godine ne treba da se približavaju osim ako nisu pod neprekidnim nadzorom.
- ▶ Ambalažni materijali su opasni za decu. Ambalažne materijale čuvajte na sigurnom mestu, van domašaja dece.
- ▶ Električni proizvodi su opasni za decu. Držite decu dalje od proizvoda dok se koristi. Ne dajte im da se igraju ovim proizvodom. Koristite funkciju zaključavanja zbog dece da biste sprečili da deca manipulišu ovim proizvodom.
- ▶ Nemojte zaboraviti da zatvorite vrata za punjenje veša kada napuštate prostoriju u kojoj se nalazi ovaj proizvod.
- ▶ Držite sve deterdžente i aditive na sigurnom mestu, dalje od domašaja dece i zatvarajte poklopac posude sa deterdžentom ili zapečatite pakovanje deterdženta.

1.3 Električna bezbednost

- ▶ U slučaju da je proizvod u kvaru, ne sme da se uključuje dok ga ne popravi ovlašćeni serviser! Postoji opasnost od strujnog udara!
- ▶ Ovaj proizvod je projektovan tako da nastavi da radi u slučaju ponovnog uspostavljanja napajanja posle nestanka struje. Ako želite da otkazete program, pogledajte deo „Otkazivanje programa“.
- ▶ Priključite proizvod na uzemljenu utičnicu zaštićenu osiguračem od 16 A. Neka Vam instalaciju uzemljenja uradi kvalifikovani električar. Naša firma neće biti odgovorna za bilo kakva oštećenja do kojih može da dođe kad se proizvod koristi bez uzemljenja u skladu sa lokalnim propisima.
- ▶ Nemojte da perete proizvod prskanjem ili prosipanjem vode na njega! Postoji opasnost od strujnog udara!

- ▶ Nikada nemojte da dodirujete kablove za napajanje vlažnim rukama! Nikad nemojte da isključujete iz struje povlačenjem kabla. Uvek pritisnite utikač jednom rukom, a izvlačite utikač tako što ćete ga uhvatiti drugom rukom.
- ▶ Proizvod treba da se isključi iz struje za vreme instalacije, održavanja, čišćenja i popravke.
- ▶ Ukoliko se kabl za napajanje ošteti, mora da ga zameni proizvođač, ovlašćeni serviser ili slično kvalifikovano lice (po mogućstvu električar) ili osoba koju je odredio uvoznik da bi se izbegli mogući rizici.

1.4 Bezbednost u vezi sa vrelim površinama

	<p>Staklo na vratima za punjenje postaje previše vruće tokom pranja na visokim temperaturama. Stoga, naročito nemojte da dozvolite deci da dodiruju staklo vrata za punjenje tokom pranja.</p>
---	--

2 Važna uputstva za zaštitu životne sredine

2.1 Usaglašenost sa WEEE direktivom



Ovaj proizvod je usaglašen sa WEEE direktivom Evropske Unije (2012/19/EU). Ovaj proizvod nosi znak klasifikacije za električni i elektronski otpad (WEEE).

Ovaj proizvod je proizveden korišćenjem visokokvalitetnih delova i materijala koji se mogu ponovo iskoristiti ili su pogodni za reciklažu. Nemojte odlagati proizvod u otpad sa običnim kućnim otpadom i drugim otpadima na kraju veka trajanja. Odložite ga u centar za sakupljanje i reciklažu električnog i elektronskog otpada. Konsultujte se sa svojim lokalnim vlastima da biste saznali o ovim centrima za sakupljanje otpada.

Usklađenost sa direktivom RoHS

Proizvod koji ste kupili usklađen je sa EU RoHS direktivom (2011/65 / EU). Ne sadrži štetne i zabranjene materijale navedene u Direktivi.

Informacije o paketu



Materijali za pakovanje proizvoda proizvedeni su od materijala koji se mogu reciklirati u skladu sa našim nacionalnim propisima o životnoj sredini. Ne bacajte materijale za pakovanje zajedno sa domaćim ili drugim otpadom. Odvedite ih do mesta sakupljanja ambalažnog materijala koje su odredile lokalne vlasti.

3 Namena

- Ovaj proizvod je dizajniran za upotrebu u domaćinstvu. Nije namenjen za komercijalnu upotrebu i ne treba ga koristiti van svoje namene.
- Ovaj proizvod sme da se koristiti samo za pranje i ispiranje veša prema njihovim etiketama.
- Proizvođač ne prihvata odgovornost koja proističe iz nepravilne upotrebe ili prenosa.
- Radni vek vašeg uređaja je 10 godina. Tokom ovog perioda će biti dostupni originalni rezervni delovi koji će omogućiti pravilan rad uređaja.

4 Tehničke specifikacije

Naziv dobavljača ili zaštitni znak	Beko
Naziv modela	WUE 7722 XW0 7001540036
Visina (cm)	84
Širina (cm)	60
Dubina (cm)	49

Jednostruki dovod vode / Dvostruki dovod vode	• / -
• Dostupno	
Napon napajanja (V/Hz)	230 V / 50Hz
Ukupna struja (A)	10
Ukupna snaga (W)	2200
Šifra glavnog modela	9217

	 ENERG 	
	BEKO	ИДЕНТИФИКАТОР МОДЕЛА → (*)
		

Informacijama o modelu koje su sačuvane u bazi podataka proizvođača možete pristupiti ulaskom na sledeći web sajt i pretraživanjem identifikatora vašeg modela (*) koji se nalazi na energetskejoj etiketi: <https://eprel.ec.europa.eu/>

4.1 Instalacija

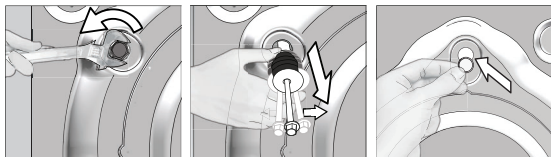
- Zatražite pomoć u vezi sa instalacijom proizvoda od najbližeg ovlašćenog servisa.
- Priprema lokacije i priključaka za struju, vodovod i kanalizaciju na mestu instalacije proizvoda su odgovornost kupca.
- Pazite da se creva za dovod i odvod vode, kao i električni kabl, ne saviju, uklješte ili prignječe prilikom postavljanja proizvoda na mesto posle instalacije i procedura čišćenja.
- Postarajte se da instalacija i električno priključivanje proizvoda bude obavljeno od strane ovlašćenog servisa. Proizvođač neće biti odgovoran za oštećenja do kojih može da dođe kada takve radove obavljaju neovlašćena lica.
- Pre instalacije vizuelno proverite da li na njemu postoje oštećenja. Ako postoje, nemojte ga instalirati. Oštećeni proizvodi predstavljaju opasnost za vašu bezbednost.

4.1.1 Odgovarajuće mesto za instalaciju

- Postavite proizvod na čvrst i ravan pod. Nemojte da ga stavljate na deo tepih ili druge slične površine.
- Kada se mašina za veš i sušenje postave jedna iznad druge, njihova ukupna težina - kada su napunjene vešom - dostiže 180 kilograma. Proizvod postavite na čvrst i ravan pod koji ima dovoljnu nosivost!
- Ne stavljajte proizvod na strujni kabl.
- Nemojte da stavljate proizvod u okruženja gde temperatura pada ispod 0 °C.
- Ostavite najmanje 1 cm prostora između mašine i nameštaja.
- Kod poda na više nivoa, nemojte da stavljate proizvod blizu ivice ili na platformu.

4.1.3 Uklanjanje transportnih brava

- 1 Olabavite sve zavrtnjave odgovarajućim ključem dok se slobodno ne okreću.
- 2 Sklonite sigurnosne zavrtnjave za transport tako što ćete ih polako okrenuti.
- 3 Ubacite plastične poklopce iz kese sa korisničkim uputstvom u otvore na zadnjoj strani.



PAŽNJA: Uklonite transportne bezbednosne vijke pre uključivanja mašine za pranje veša! U suprotnom se proizvod može oštetiti.



Držite transportne bezbednosne vijke na sigurnom mestu da biste ih mogli ponovo koristiti kad se mašina bude jednom ponovo prenosila.

Postavite transportne bezbednosne vijke u obrnutom redosledu u odnosu na proceduru rastavljanja.

Nikad ne pomerajte proizvod bez montiranih bezbednosnih vijaka!

4.1.4 Povezivanje dovoda vode

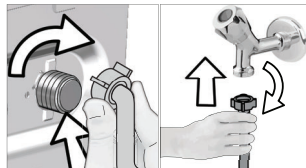


Pritisak dovoda vode potreban da bi mašina radila mora da bude od 1 do 10 bara (0,1 – 1 MPa). Morate da imate 10 – 80 litara vode koja teče iz potpuno otvorene slavine u jednom minutu da bi mašina radila kako treba. Dodajte ventil za smanjivanje pritiska ako je pritisak vode prejak.



PAŽNJA: Modeli sa jednostrukim dovodom vode ne smeju da se spajaju na slavinu sa toplom vodom. U tom slučaju će se oštetiti veš ili će proizvod uključiti zaštitu i neće raditi.

PAŽNJA: Ne koristite stara ili korišćena creva za dovod vode na novom proizvodu. To može da prouzrokuje fleke na vašem vešu.



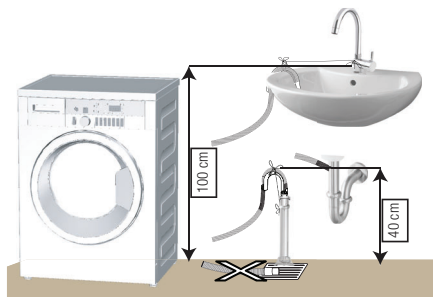
- 1 Zategnite matice creva rukom. Nikad ne koristite alat za pritezanje ovih navrtki.
- 2 Kada se priključivanje creva završi, proverite da li ima curenja na mestima povezivanja tako što ćete slavine otvoriti u potpunosti. Ako curi, zatvorite slavinu i uklonite navrtku. Proverite zaptivač i ponovo pažljivo pritegnite navrtku. Da biste sprečili curenja vode i oštećenje, slavine držite zatvorene kada ne koristite proizvod.

4.1.5 Povezivanje odvodnog creva sa odvodnim otvorom

- Prključite kraj creva direktno na kanalizacionu cev, odvod lavboa ili kade.



PAŽNJA: Vaša kuća može da bude poplavljena ako crevo izađe iz kucišta za vreme izbacivanja vode. Osim toga, postoji opasnost od opekotina zbog visokih temperature pranja! Da biste sprečili takve situacije i postarali se da mašina obavlja procese prihvatanja i odvoda vode bez problema, pričvrstite crevo za odvod čvrsto.



- Priključite crevo za odvod minimalne dužine 40 cm a maksimalne dužine 100 cm.
- U slučaju da je crevo za odvod dignuto posle stajanja na podu ili blizu poda (manje od 40 cm iznad zemlje), ispuštanje vode postaje teže i veš može da izađe mokar. Zato treba da se držite visina opisanih na slici.

- Da biste sprečili vraćanje prljave vode u mašinu i obezbedili jednostavno odvođenje, nemojte da potapate kraj creva u prljavu vodu i nemojte da ga ubacujete u odvodni otvor više od 15 cm. Ako je previše dugačko, skratite ga.
- Kraj creva ne sme da se savija i ne sme da se gazi, a crevo se ne sme ukleštiti između odvoda i mašine.
- Ako je dužina creva prekratka, produžite ga originalnim dodatnim crevom. Dužina creva ne sme da bude veća od 3,2 m. Da biste izbegli probleme sa curenjem vode, veza između produžnog creva i odvodnog creva na proizvodu mora da bude pričvršćena dobro odgovarajućom stegom tako da ne dođe do spadanja i curenja.

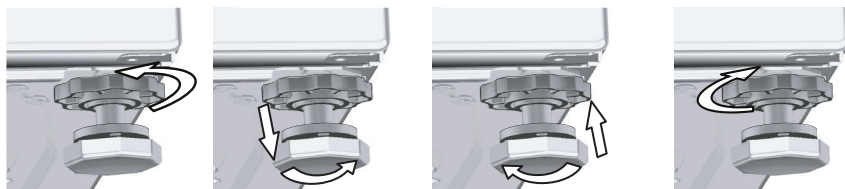
4.1.6 Podešavanje nožica



PAŽNJA: Da bi osigurali tiši rad proizvoda bez vibracija, on mora da stoji ravno i u ravnoteži na svojim nožicama. Uravnotežite mašinu podešavanjem nožica. U suprotnom se može desiti da se proizvod pomera sa svog mesta i izazove probleme sa vibracijama i lomovima.

PAŽNJA: Ne koristite nikakve alate za popuštanje blokirajućih navrtki. U suprotnom se mogu oštetiti.

- 1 Rukom otpustite blokirajuće navrtke na nožicama.
- 2 Podesite nožice dok proizvod bude mogao da stoji stabilno i balansirano.
3. Sve blokirajuće navrtke pritegnite ručno.



4.1.7 Povezivanje struje

Proizvod priključite na uzemljenu utičnicu koja je zaštićena osiguračem od 16 A. Naša firma neće biti odgovorna za bilo kakva oštećenja do kojih može da dođe kad se proizvod koristi bez uzemljenja u skladu sa lokalnim propisima.

- Povezivanje mora da bude obavljeno prema nacionalnim standardima.
- Ožičenje kola električne utičnice mora da bude dovoljno tako da zadovolji zahteve uređaja. Korišćenje osigurača za slučaj neispravnog uzemljenja je preporučeno.
- Utikač kablova za napajanje mora da bude pristupačan nakon instalacije.
- Ako je trenutna vrednost osigurača u Vašoj kući manja od 16 ampera, neka vam električar ugradi osigurač od 16 ampera.
- Napon naveden u "Tehničkim specifikacijama" mora da bude jednak naponu vaše električne mreže.
- Ne priključivati preko produžnih kablova ili razvodnika.



PAŽNJA: Oštećeni strujni kabl mora zameniti ovlašćeni električar.

4.1.8 Prva upotreba



Pre početka korišćenja proizvoda, proverite da li su sve pripreme u skladu sa odeljkom „Važna uputstva vezana za bezbednost i životnu sredinu“ i uputstvima iz odeljka „Instalacija“.

Da biste pripremili proizvod za pranje veša, prvo uključite program za čišćenje doboša. Ako ovaj program nije dostupan na vašoj mašini, koristite metod koji je opisan u odeljku 4.4.2.



Koristite sredstvo za uklanjanje kamenca koje je podesno za mašine za pranje veša.

U proizvodu je možda ostalo malo vode iz procesa kontrole kvaliteta u proizvodnji. To ne šteti proizvodu.

4.2 Priprema

4.2.1. Sortiranje veša

- Sortirajte veš prema vrsti tkanine, boji, prema tome koliko je prljav i prema dozvoljenoj temperaturi vode.
- Uvek se držite uputstava koja su navedena na etiketama za održavanje odeće.

4.2.2 Priprema veša za pranje

- Veš sa metalnim dodacima kao što su umetnute žice, kopče kaiša i metalna dugmad mogu da oštete mašinu. Uklonite metalne dodatke ili operite takav veš tako što ćete ga staviti u vreću za veš ili jastučnicu.
- Izvadite sve stvari iz džepova, kao što su novčići, olovke i spajalice, izvnrne džepove naopačke i iščetkajte ih. Takvi objekti mogu da oštete proizvod ili da izazovu problem sa bukom.
- Odeću male veličine, kao što su dečije sokne i najlon čarape, stavite u vreću za veš ili jastučnicu.
- Zaveses stavljajte tako da ih ne pritiskate. Uklonite dodatke sa zavesa.
- Zatvorite rajsferšluse, zašijte dugmad koja visi i ušijte pocepano.
- Perite proizvode označene sa „pere se u mašini” ili „pere se na ruke” samo u odgovarajućem programu.
- Ne perite beli i obojeni veš zajedno. Novi tamni pamučni veš može da ispusti puno boje. Perite ih posebno.
- Uporne fleke se moraju pravilno obraditi pre pranja. Ako niste sigurni, raspitajte se u radnji za hemijsko čišćenje.
- Koristite samo sredstva za boje koja odgovaraju mašinskom pranju. Uvek se držite uputstava na pakovanju.
- Pantalone i osetljivo rublje perite izvnrno naopačke.
- Komade odeće od angore držite u frižideru nekoliko sati pre pranja. To će smanjiti čebanje.
- Veš koji je bio izložen materijama kao što su brašno, prašina, mleko u prahu itd. mora dobro da se istrese pre stavljanja u proizvod. Takve prašine i praškovi na vešu mogu da se natalože u unutrašnjosti proizvoda tokom vremena i izazovu oštećenje.

4.2.3 Saveti za uštedu energije i vode

Sledeće informacije će vam pomoći da ovaj proizvod koristite na ekološki i energetski (ušteda struje i vode) efikasan način.

- Proizvod koristiti za najveći kapacitet koji dozvoljava izabrani program, ali ne preopterećujte mašinu. Pogledajte „Tabelu programa i korišćenja”.
- Poštujte uputstva u vezi sa temperaturom data na pakovanju deterdženta.
- Malo prljav veš perite na niskim temperaturama.
- Koristite brže programe za male količine ili malo prljav veš.
- Ne koristite pretpranje i visoke temperature za veš koji nije mnogo prljav ili isflekan.
- Ako planirate da sušite veš u mašini za sušenje veša, izaberite najveću brzinu centrifuge koja je preporučena za proces pranja.
- Nemojte da koristite više deterdženta nego što je preporučeno na njegovom pakovanju.

4.2.4 Stavljanje veša

1. Otvorite vrata za punjenje veša.
2. Stavite odeću u proizvod bez nabijanja.
3. Gurnite vrata za punjenje da biste ih zatvorili tako da pritom čujete zvuk zaključavanja. Pazite da vrata ništa ne zahvate. Vrata za punjenje su zaključana dok je program u toku. Brava će se odmah otvoriti nakon što se završi program pranja. Tada možete da otvorite vrata za punjenje veša. Ako se vrata ne otvore, primenite rešenja koja su priložena za grešku „Loading door cannot be opened” (Vrata za ubacivanje veša se ne mogu otvoriti) u odeljku Rešavanje problema.

4.2.5 Odgovarajući kapacitet punjenja

Maksimalni kapacitet punjenja zavisi od vrste veša, od toga koliko je prljav i koji program želite da koristite. Proizvod automatski podešava količinu vode na osnovu težine stavljenog veša.

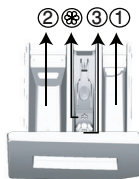


UPOZORENJE: Držite se informacija iz odeljka „Tabele programa i potrošnje”. Ako je preopterećena, rezultati pranja mašine biće slabiji. Štaviše, mogu se javiti problemi sa bukom i vibriranjem.

4.2.6 Korišćenje deterdženta i omekšivača



Kada se koristi deterdžent, omekšivač, štrak, boja za tkaninu, izbeljivač ili sredstva za uklanjanje kamenca, pažljivo pročitajte uputstvo proizvođača na pakovanju i držite se navedenih vrednosti za doziranje. Koristite čašicu za merenje ako postoji.



Fioka za deterdžent se sastoji od 3 odeljka:

- (1) za pretpranje
- (2) za glavno pranje
- (3) za omekšivač
- (⊛) osim toga, postoji sifonski deo u odeljku za omekšivač.

Deterdžent, omekšivači i druga sredstva za pranje

- Dodajte deterdžent i omekšivač pre pokretanja programa pranja.
- Dok je ciklus pranja u toku, nemojte da ostavljate fioku za deterdžent otvorenu!
- Kada koristite program bez pretpranja, ne stavljajte deterdžent u odeljak za pretpranje (odeljak br. „1“).
- Kod programa sa pretpranjem ne stavljajte tečni deterdžent u odeljak za pretpranje (odeljak br. „1“).
- Ne birajte program sa pretpranjem ako koristite kesu s deterdžentom ili kuglu za raspršivanje. Stavite kesu s deterdžentom ili kuglu za raspršivanje u proizvod, direktno među vešom.
- Ako koristite tečni deterdžent, nemojte zaboraviti da posudu za tečni deterdžent stavite u odeljak za glavno pranje (odeljak br. „2“).

Izbor vrste deterdženta

Tip deterdženta koji treba koristiti zavisi od programa pranja, vrste i boje tkanine.

- Koristite različite deterdžente za beli veš i veš u boji.
- Osetljivju odeću perite specijalnim deterdžentima (tečni deterdžent, šampon za vunu itd.) koji su namenjeni isključivo za osetljivju odeću i za preporučene programe.
- Kada perete odeću tamnije boje i kiltove, preporučuje se korišćenje tečnog deterdženta.
- Vunene stvari perite u preporučenom programu specijalnim deterdžentom koji je namenjen za vunu
- Molimo pregledajte deo opisa programa za preporučeni program za razne tkanine.
- Sve preporuke oko deterdženata važe za selektivne domete temperature programa.



UPOZORENJE: Koristite samo deterdžente proizvedene specijalno za mašinsko pranje.

UPOZORENJE: Nemojte da koristite sapun u obliku pudera.

Podešavanje količine deterdženta

Količina deterdženta koja će da se koristi zavisi od količine veša, od toga koliko je prljav i od tvrdoće vode.

- Nemojte da koristite količine koje prelaze doze preporučene na pakovanju da biste izbegli problem sa previše pene, lošim ispiranjem, finansijskom uštedama i, na kraju, zaštitom okoline.
- Koristite manje deterdženta za male količine veša ili za malo prljav veš.

Korišćenje omekšivača

Sipajte omekšivač u odeljak za omekšivač fioke za deterdžent.

- Nemojte da pređete znak (>max<) na odeljku za omekšivač.
- Ako je omekšivač izgubio tečnost, razblažite ga vodom pre nego što ga stavite u fioku za deterdžent.

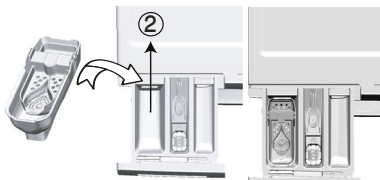


UPOZORENJE: Nemojte da koristite tečne deterdžente ili druge proizvode za čišćenje, izuzev omekšivača za veš, koji su proizvedeni za mašine za pranje veša za omekšavanje odeće.

Korišćenje tečnih deterdženata

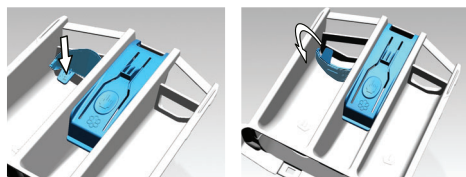
Ako proizvod sadrži šolju za tečni deterdžent:

- Stavite posudu za tečni deterdžent u odeljak br. „2“.
- Ako je tečni deterdžent izgubio svoju tečnost, razblažite ga vodom pre stavljanja u posudu za deterdžent.



Ako je proizvod opremljen delom za tečni deterdžent:

- Kada želite da koristite tečni deterdžent, povucite aparat prema sebi. Deo koji ispadne služiće kao barijera za tečni deterdžent.
- Ako je neophodno, očistite aparat vodom kada je u odgovarajućem položaju ili tako što ćete ga ukloniti.
- Ako koristite deterdžent u prahu, aparat mora da bude pričvršćen u gornjem položaju.



Ako proizvod ne sadrži šolju za tečni deterdžent:

- Ne koristite tečni deterdžent za pretrpanje u programima sa pretrpanjem.
- Tečni deterdžent ostavlja fleke na vašoj odeći ako se koristi sa funkcijom „End Time“ (Vreme završetka) prilikom odloženog početka. Ako hoćete da koristite funkciju Vreme završetka, ne koristite tečni deterdžent.

Korišćenje deterdženta u obliku gela i table

- Ako je gustina gel-deterdženta fluidna, a vaša mašina nema specijalnu posudu za teći deterdžent, gel-deterdžent stavite u odeljak za glavno pranje prilikom prvog uzimanja vode. Ako vaša mašina sadrži posudu za tečni deterdžent, sipajte ga u tu posudu pre nego što pokrenete program.
- Ako gustina gel-deterdženta nije fluidna ili je u deterdžent u obliku tablete sa kapsuliranom tečnošću, pre pranja ga stavite direktno u doboš.
- Deterdžent u obliku tablete stavite u odeljak za glavno pranje (odeljak br. „2“) ili direktno u doboš pre pranja.

Korišćenje štirka

- Tečni štirak, štirak u prahu ili boju dodajte u odeljak za omekšivač.
- Nemojte koristiti omekšivač i štirak zajedno u ciklusu pranja.
- Posle korišćenja štirka, obrišite unutrašnjost mašine vlažnom i čistom krpom.

Korišćenje sredstva za uklanjanje kamenca

- Ako je potrebno, koristite sredstva za uklanjanje kamenca koja su proizvedena specijalno za mašine za pranje veša.

Korišćenje izbeljivača

- Izaberite program sa pretrpanjem i dodajte izbeljivač na početku pretrpanja. Ne stavlajte deterdžent u odeljak za pretrpanje. Drugi način bi bio da izaberete program sa dodatnim ispiranjem i dodate izbeljivač dok mašina uzima vodu preko fioke za deterdžent tokom prve faze ispiranja.
- Nemojte da koristite pomešan izbeljivač i deterdžent.
- Izbeljivač koristite u maloj količini (oko 50 ml) i isperite dobro odeću jer može da iritira kožu.
- Nemojte da sipate izbeljivač na veš.
- Nemojte da ga koristite sa obojenim vešom.
- Prilikom korišćenja izbeljivača na bazi kiseonika izaberite program koji pere veš na niskoj temperaturi.
- Izbeljivač na bazi kiseonika može se koristiti zajedno sa deterdžentom. Međutim, ako njegova gustina nije ista kao gustina deterdženta, prvo stavite deterdžent u odeljak br. „2“ fioke za deterdžent i sačekajte da deterdžent bude pokupljen prilikom uzimanja vode. Dok proizvod nastavlja da uzima vodu, dodajte izbeljivač u isti odeljak.

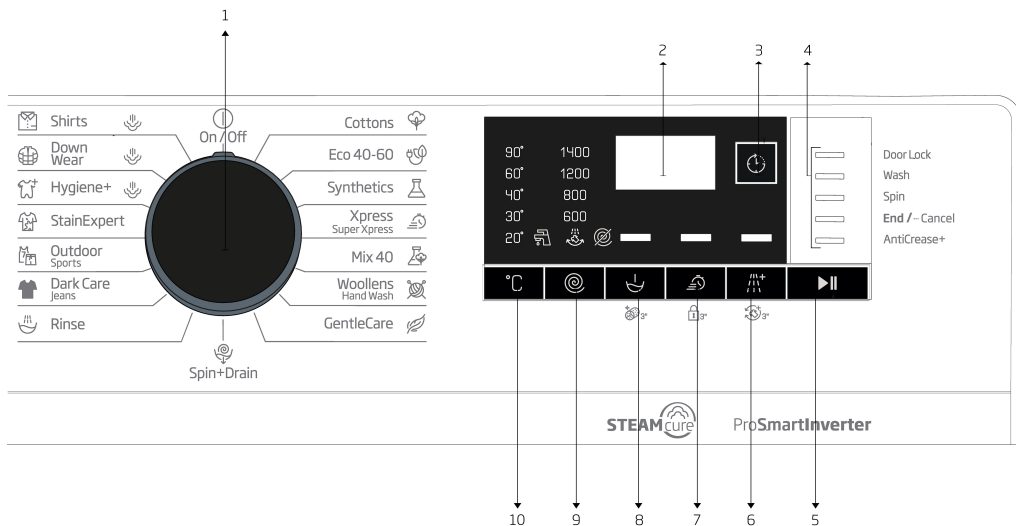
4.2.7 Saveti za efikasnije pranje

		Odeća			
		Pastelne boje i beli veš	Boje	Crni/veš tamne boje	Osetljivo/Vuna/Svila
		(Preporučeni opseg temperatura zaviso od zaprjanosti: 40–90 °C)	(Preporučeni opseg temperatura zaviso od zaprjanosti: hladno -40 °C)	(Preporučeni opseg temperatura zaviso od zaprjanosti: hladno -40 °C)	(Preporučeni opseg temperatura zaviso od zaprjanosti: hladno -30 °C)
Zaprjano	Veoma prjiv (teške mrlje, kao što su mrlje od trave, kafe, voda i krvi.)	Moguće je da bude potrebno da se mrlje tretiraju ili da se obavi prepranje. Praškasti i tečni deterđenti koji su preporučeni za beli veš mogu se koristiti u dozama preporučenim za veoma prjiv veš. Preporučuje se korišćenje praškastih deterđzenata za čišćenje mrlja od blata, kao i mrlja koje reaguju na izbeljivače.	Praškasti i tečni deterđenti koji su preporučeni za veš u boji mogu se koristiti u dozama preporučenim za veoma prjiv veš. Preporučuje se korišćenje praškastih deterđzenata za čišćenje mrlja od blata, kao i mrlja koje reaguju na izbeljivače. Treba koristiti deterđente koji ne sadrže izbeljivač.	Praškasti i tečni deterđenti koji su preporučeni za veš u boji i tamne boje mogu se koristiti u dozama preporučenim za veoma prjiv veš.	Za osetljivu odeću je bolje koristiti tečne deterđente. Vunena i svilena odeća mora da se pere specijalnim deterđentima za vunu.
	Normalno prjiv (Na primer, za mrlje koje su izazvane znojenjem na okovratnicima i manžetnama)	Praškasti i tečni deterđenti koji su preporučeni za beli veš mogu se koristiti u dozama preporučenim za normalno prjiv veš.	Praškasti i tečni deterđenti koji su preporučeni za veš u boji mogu se koristiti u dozama preporučenim za normalno prjiv veš. Treba koristiti deterđente koji ne sadrže izbeljivač.	Praškasti i tečni deterđenti koji su preporučeni za veš u boji i tamne boje mogu se koristiti u dozama preporučenim za normalno prjiv veš.	Za osetljivu odeću je bolje koristiti tečne deterđente. Vunena i svilena odeća mora da se pere specijalnim deterđentima za vunu.
	Malo prjiv (Nema vidljivih mrlja.)	Praškasti i tečni deterđenti koji su preporučeni za beli veš mogu se koristiti u dozama preporučenim za malo prjiv veš.	Praškasti i tečni deterđenti koji su preporučeni za veš u boji mogu se koristiti u dozama preporučenim za malo prjiv veš. Treba koristiti deterđente koji ne sadrže izbeljivač.	Praškasti i tečni deterđenti koji su preporučeni za veš u boji i tamne boje mogu se koristiti u dozama preporučenim za malo prjiv veš.	Za osetljivu odeću je bolje koristiti tečne deterđente. Vunena i svilena odeća mora da se pere specijalnim deterđentima za vunu.

Tabela simbola

4.3 Rad sa proizvodom

4.3.1 Kontrolna tabla



1 – Tipka za odabir programa (najgornji položaj uključeno / isključeno)

2 - Displej

3 - Tipka za podešavanje vremena završetka

4 - Pokazatelj sleda programa

5 - Tipka za „Pokretanje/Pauziranje“

6 - Tipka pomoćne funkcije 3

7 - Tipka pomoćne funkcije 2

8 - Tipka pomoćne funkcije 1

9 - Tipka za podešavanje brzine centrifuge

10 - Tipka za podešavanje temperature

4.3.2 Priprema mašine

1. Proverite jesu li creva čvrsto spojena.
2. Uključite mašinu u struju.
3. Otvorite slavinu do kraja.
4. Stavite veš u mašinu.
5. Dodajte deterdžent i omekšivač.

4.3.3 Odabir programa i saveti za efikasno pranje

1. Odaberite program koji odgovara vrsti, količini i zaprljanosti veša u skladu s „Tabelom programa i potrošnje“ i tabelom temperature u nastavku.
2. Odaberite željeni program tipkom za izbor programa.

4.3.4 Tabela programa i potrošnje

SB	Program	Maks. opterećenje (kg)	Potrošnja vode (l)	Potrošnja energije (kWh)	Pomoćne funkcije					temperature
					Maks. brzina	Pretrpanje	Brzo+	Dodatno ispiranje	Protiv gužvanja+	
Cottons	90	7	92	2,25	1400	•	•	•	•	Hladno - 90
	60	7	92	1,70	1400	•	•	•	•	Hladno - 90
	40	7	89	1,05	1400	•	•	•	•	Hladno - 90
Eco 40-60	40 ***	7	52,0	0,990	1400					40-60
	40 ***	3,5	44,0	0,600	1400					40-60
	40 ***	2	36,0	0,340	1400					40-60
Synthetics	60	3	65	1,20	1200	•	•	•	•	Hladno - 60
	40	3	63	0,75	1200	•	•	•	•	Hladno - 60
Xpress / Super Short	90	7	62	2,00	1400		•	•	•	Hladno - 90
	60	7	62	1,10	1400		•	•	•	Hladno - 90
	30	7	60	0,20	1400		•	•	•	Hladno - 90
Xpress / Super Short + Fast	30	2	41	0,15	1400		•	•	•	Hladno - 30
Mixt 40	40	3	65	0,75	800	•	•		•	Hladno - 40
Woollens / Hand Wash	40	1,5	55	0,55	1200			•		Hladno - 40
Gentlecare	30	3	51	0,65	1200			•		Hladno - 40
Dark care / Jeans	40	2,5	82	0,85	1200	•	•	*	•	Hladno - 40
Outdoor / Sports	40	3	44	0,45	800	•				Hladno - 40
Stain Expert	30	3,5	70	1,50	1400	•	•			30 - 60
Hygiene+ + para	90	7	129	2,80	1400			*		40-90
Down Wear + para	60	1,5	75	1,75	800			•		40-60
Shirts + para	60	3	62	1,70	800	•	•	•	•	40-60
Drum Clean + para	90	-	76	2,40	600					90

• : Izbor

* : Automatski izabrano, ne može se otkazati.

***Eco 40-60 sa izborom temperature od 40 °C je program ispitivanja u skladu sa EN 60456: 2016 / A11: 2020 i energetsom oznakom sa Delegiranom uredbom Komisije (EU) 2019/2014.

- : Pogledajte opis programa za maksimalno opterećenje.

Vrednosti potrošnje (SB)

	Izbor temperature (°C)	Brzina centrifuge (o/min)	Kapacitet (kg)	Trajanje programa (čč. mm)	Potrošnja energije (kWh/ ciklus)	Potrošnja vode (L/ciklus)	Temperatura veša (°C)	Sadržaj praostale vlage (%)
Eco 40-60	40	1400	7,0	03:27	0,990	52,0	41	53
	40	1400	3,5	02:41	0,600	44,0	39	53
	40	1400	2	02:41	0,340	36,0	25	53
Cottons	20	1400	7	03:35	0,700	89,0	20	53
Cottons	60	1400	7	03:35	1,700	92,0	60	53
Synthetics	40	1200	3	02:15	0,750	63,0	40	40
Express / Super Xpress	30	1400	7	00:28	0,200	60,0	23	62

4.3.5 Glavni programi

Zavisno od vrste tkanine, koristite sledeće glavne programe.

Cottons (Pamuk)

U ovom programu možete da perete svoje izdržljivo pamučno rublje (čaršave, posteljina, peškire, bademantile, veš itd.). Kada se pritisne taster za funkciju brzog pranja, trajanje programa se vidno smanjuje, ali je efikasno pranje zagarantovano intenzivnim pokretima mašine tokom pranja. Ako se funkcija brzog pranja ne izabere, vrhunski učinak pranja i ispiranja je zagarantovan za vaše izuzetno zaprljano rublje.

Synthetics (Sintetika)

U ovom programu možete da perete svoje rublje (kao što su košulje, bluze, tkanine koje su mešavina sintetike i pamuka itd.). Trajanje programa se znatno skraćuje, a pranje s velikim učinkom je zagarantovano. Ako funkcija brzog pranja nije izabrana, vrhunski učinak pranja i ispiranja su zagarantovani za vaš izuzetno zaprljan veš.

Woolens / Hand Wash (Vuna / Ručno pranje)

Koristite za pranje svoje vunene/osetljive odeće. Izaberite odgovarajuću temperaturu koja je navedena na etiketama odeće. Veš se pere veoma laganim pokretima pranja da se odeća ne bi oštetila.

4.3.6 Dodatni programi

Ova mašina ima dodatne programe za posebne slučajeve.



Dodatni programi mogu da budu različiti, što zavisi od modela mašine.

Eco 40-60

Program eco 40-60 može u istom ciklusu oprati normalno zaprljan pamučni veš za koji je navedeno da se može prati na 40 °C ili 60 °C, a ovaj se program koristi za procenu usklađenosti sa zakonodavstvom EU-a o ekološkom dizajnu. Iako pere duže od ostalih programa, omogućava veliku uštedu energije i vode. Stvarna temperatura vode može biti različita od navedene temperature pranja. Kada u mašinu stavite manje veša (npr. ½ kapaciteta ili manje), periodi u programskim fazama mogu se automatski skratiti. U tom će se slučaju potrošnja struje i vode smanjiti.

Higiene+ (Higijenski+)

Ovaj program koristite za veš koji zahteva antialergijsko i higijensko pranje pri visokoj temperaturi sa intenzivnim i drugim ciklusom pranja. Visok nivo higijene je obezbeđen zahvaljujući dužem vremenu zagrevanja i dodatnom koraku ispiranja.

- Program je testiran u institutu „VDE” pri izabranoj opciji temperature od 20 °C i potvrđen je u pogledu svoje efikasnosti u uklanjanju bakterija i buđi.
- Program je testiran u „The British Allergy Foundation” (Allergy UK) pri izabranoj opciji temperature od 60 °C i potvrđen je u pogledu svoje efikasnosti u uklanjanju alergena pored bakterija i buđi.



Allergy UK je brend Britanske organizacije za alergije. Pečat odobrenja kreiran je da pruži smernice ljudima koji zahtevaju preporuku za proizvod vezanu za to da proizvod ograničava/ smanjuje/uklanja alergene ili značajno smanjuje količinu alergena u sredini u kojoj se nalaze lica koja pate od alergija. Njegov cilj je da pruži garanciju da su proizvodi naučno testirani ili ispitani tako da pružaju rezultate koji se mogu izmeriti.

GentleCare/Delicates (Osetljivo rublje)

U ovom programu možete da perete osetljivu odeću kao što je pletena i tkana odeća. Aktivnost pranja je delikatnija. Perite odeću čiju boju želite da sačuvate na 20 stepeni ili izborom opcije hladnog pranja.

Xpress / Xpress Super Short (Dnevno ekspresno / ekspresno super kratko)

Ovaj program koristite za kraće pranje neuflekane pamučne odeće koja nije mnogo prljava. Kada se izabere funkcija brzog pranja, trajanje programa se može skratiti na do 14 minuta. Kada se izabere funkcija brzog pranja, smete da perete najviše 2 (dva) kg veša.

Dark Care / Jeans (Tamni veš / džins)

Koristite ovaj program da zaštitite boju svoje tamno obojene odeće ili džinsa. Obavlja pranje visokom učinka uz specijalno kretanje doboša čak i pri niskoj temperaturi. Preporučuje se da se za veš tamne boje koristi tečni deterdžent ili šampon za vunu. Nemojte da perete osetljivu odeću koja sadrži vunu i slično.

Mix 40 (Mešano 40)

Koristite ovaj program za istovremeno pranje svoje pamučne i sintetičke odeće koju ne morate sortirati.

Shirts (Košulje)

Ovaj program se koristi za pranje košulja od pamuka, sintetike i uopšte tkanina koje sadrže sintetiku. Smanjuje gužvanje. Kada se izabere funkcija brzog pranja, izvršava se algoritam pretpranja.

Nanesite hemijsko sredstvo za pretpranje na svoj veš direktno ili ga dodajte uz deterdžent kada mašina

počne da uzima vodu iz odeljka za glavno pranje. Tako možete da postignete isti učinak kao i kod uobičajenog pranja za dosta kraće vreme. Vek upotrebe vaših košulja se produžava.

Outdoor / Sports (Odeća za rekreaciju / sportska odeća)

Možete da koristite ovaj program za pranje sportske odeće i odeće za rekreaciju koja sadrži mešavinu pamuka i sintetike, kao i prekrivače otporne na kišu kao što je gore-tex itd. On obezbeđuje da se vaša odeća opere laganim okretanjem zahvaljujući specijalnim kružnim pokretima.

Down Wear (Odeća od perja)

Koristite ovaj program za pranje kaputa, prsluka, jakni itd. Koji imaju oznaku „mašinsko pran
Zahvaljujući posebnim spin profilima, osigurava se da voda dospe u vazdušne praznine između pera.
Para se na kraju programa primenjuje za omekšavanje glomaznog veša kao što su peškiri.



INFORMACIJE

- Ne puniti mašinu sa više od dvostrukog prekrivača od vlakana (200 k 200 cm).
- Ne perite pamučne poplune, jastuke itd. U mašini.



OPREZ!

- Ne koristite mašinu za pranje veša za pranje materijala kao što su tepisi, prostirke itd. U suprotnom će doći do trajnog oštećenja mašine.

StainExpert(Stručnjak zamrlj)

Mašina poseduje specijalni program za mrlje koji omogućava uklanjanje različitih vrsta mrlja na najefikasniji način. Koristite program samo za izdržljivi pamučni veš u boju. Nemojte da perete osetljivu odeću farbanu pigmentima i veš u ovom programu. Pre pranja, potrebno je proveriti etikete odeće (preporučeno za pamučne košulje, pantalone, šortseve, majice, odeću za bebe, pižame, kecelje, stolnjake, čaršave, prekrivače, posteljina, jastučnice, peškire za kupatilo i plažu, peškire, čarape, pamučni donji veš koji su pogodni za pranje na visokoj temperaturi i duže vreme). U automatskom programu za mrlje možete da perete 24 vrste mrlja podeljene u dve različite grupe na osnovu izbora brze funkcije. Možete da vidite grupe mrlja na osnovu izbora brze funkcije. Grupe mrlja možete pronaći na osnovu brze funkcije u nastavku:

Kada se izabere brza funkcija:		
Krv	Čaj	Crveno vino
Čokolada	Kafa	Kari
Puding	Voćni sok	Džem
Jaje	Kečap	Ugalj
Kada se brza funkcija ne izabere:		
Puter	Znoj	Preliv za salatu
Trava	Zaprljana kragna	Šminka
Blato	Hrana	Mašinsko ulje
Koka kola	Majonez	Hrana za bebe

- Izaberite program za mrlje.
- Izaberite mrlju koju želite da očistite tako što ćete da locirate grupu u koju je svrstana iznad i tako što ćete da izaberete odgovarajuću grupu koristeći taster za brzu dodatnu funkciju.
- Pročitajte etiketu odeće pažljivo i postarajte se da izaberete odgovarajuću temperaturu i brzinu centrifugiranja.

4.3.7 Posebni programi

Za posebne primene izaberite bilo koji od sledećih programa.

- **Rinse (Ispiranje)**

Koristite kada hoćete posebno ispiranje ili dodavanje štirka.

- **Spin+Drain (Centrifuga + sušenje)**

Možete da koristite ovu funkciju za uklanjanje vode sa veša ili za izbacivanje vode iz mašine.

Pre pokretanja ovog programa, izaberite traženu brzinu centrifuge i pritisnite dugme „Početak/pauza”. Prvo će mašina ispušpati vodu iz nje. Zatim će centrifugirati veš sa podešenom brzinom centrifuge i ispušpati vodu koja je izašla iz njega.

Ako hoćete samo da ispustite vodu bez centrifugiranja veša, izaberite program „Ispumpavanje+centrifuga”, a zatim izaberite funkciju „Bez centrifuge” dugmetom za podešavanje brzine centrifuge. Pritisnite dugme „Početak/pauza”.



Za osetljiv veš koristite nižu brzinu centrifuge.

4.3.8 Odabir temperature

Kad odaberete novi program, temperatura predviđena za taj program pojaviće se na indikatoru za temperaturu. Da biste smanjili temperaturu, pritisnite tipku za podešavanje temperature. Temperatura će se postupno smanjiti. Lampice indikatora za nivo temperature neće se uključiti ako je odabran nivo za pranje u hladnoj vodi.



Ako program nije dosegno korak zagrevanja, možete promeniti temperaturu bez prebacivanja mašine na režim pauze.

4.3.9 Odabir brzine centrifuge

Kod odabira novog programa, preporučena brzina centrifuge odabranog programa prikazana je na indikatoru za brzinu centrifuge.

Da biste smanjili brzinu centrifuge, pritisnite tipku za podešavanje brzine centrifuge. Brzina centrifuge smanjuje se postupno. Zatim se, zavisno od modela proizvoda, na ekranu prikazuju opcije „Zadržavanje ispiranja” i „Bez centrifuge”. Ako je odabrana opcija „Bez centrifuge”, neće se uključiti lampice indikatora za nivo ispiranja.

Zadržavanje ispiranja

Ako ne želite izvaditi odeću odmah nakon završetka programa, možete se koristiti funkcijom zadržavanja ispiranja i zadržati vodu u poslednjem ispiranju, čime ćete sprečiti gužvanje odeće do kojeg dolazi kada mašina ispusti vodu. Pritisnite tipku Početak/Pauza nakon ovog procesa ako želite izbaciti vodu bez centrifuge. Program će se nastaviti tamo gde je stao, iscediće vodu i završiti.

Ako želite staviti na centrifugu rublje koje je u vodi, prilagodite brzinu centrifuge i pritisnite tipku za početak/pauzu. Program će se nastaviti. Voda će se iscediti, rublje će biti iscentrifugirano i program će završiti.



Ako program nije dosegno korak centrifuge, možete promeniti temperaturu bez prebacivanja mašine na pauzu.

4.3.10 Odabir pomoćne funkcije

Odaberite željene pomoćne funkcije pre pokretanja programa. Možete takođe odabrati ili opozvati dodatne funkcije koje su prikladne za program koji traje bez pritiska na tipku početak/pauza dok mašina radi. Za to mašina mora biti u koraku pre pomoćne funkcije koju ćete odabrati ili opozvati. Ako se pomoćna funkcija ne može odabrati ili opozvati, lampica odgovarajuće pomoćne funkcije trperiće 3 puta da upozori korisnika.



Ako je druga pomoćna funkcija neusklađena s prvom, ranije odabrane pre pokretanja mašine za pranje, opozvat će se prva odabrana funkcija, a druga pomoćna funkcija ostaće uključena.

Pomoćna funkcija koja nije kompatibilna s programom ne može se odabrati. (Pogledajte „Tablicu programa i potrošnje”)

Tipke dodatnih programa mogu se razlikovati prema modelu vaše mašine za pranje.

4.3.10.1 Dodatne funkcije

• Prewash (Pretpranje)

Pretpranje se isplati samo za jako prljavi veš. Bez pretpranja štedite struju, vodu, deterdžent i vreme.



Pretpranje bez deterdženta se preporučuje za til i zavese.

• Fast+ (Brzo+)

Kada se izabere ova funkcija, trajanje programa se skraćuje za 50%.

Zahvaljujući koracima optimizovanog pranja, velikoj mehaničkoj aktivnosti i optimalnoj potrošnji vode, visok učinak pranja postiže se uprkos smanjenom trajanju.

• Extra Rinse (Dodatno ispiranje)

Ova funkcija omogućava proizvodu da obavi još jedno ispiranje pored onog koje je već obavio nakon glavnog pranja. Na taj način, rizik od iritacije kože (kod beba, osoba sa osetljivom kožom itd.) usled minimalnog zaostatka deterdženta na vešu se može smanjiti.

4.3.10.2 Funkcije/programi izabrani pritiskom dugmadi za funkcije tokom 3 sekunde

• Čišćenje doboša 3"

Pritisnite i zadržite pritisak na taster za dodatnu funkciju 1 tokom 3 sekunde za izbor programa.

Koristite redovno (jednom na svakih 1–2 meseca) da biste očistili doboš i obezbedili potrebnu higijenu.

Pokrenite program kada je mašina u potpunosti prazna. Da biste postigli bolje rezultate, stavite sredstvo za uklanjanje kamenca iz mašina za pranje u odeljak II za deterdžent „2“. Kada se ovaj program završi, ostavite vrata za punjenje odškrinuta da bi se osušila unutrašnjost mašine.



Ovo nije program za pranje. Ovo je program za održavanje.

Nemojte da pokrećete program ako u mašini ima veša. Ukoliko pokušate da učinite to, mašina detektuje da u mašini ima veša i prekida program.

• Zaključavanje zbog dece 3"

Koristite funkciju zaključavanja zbog dece da biste sprečili da se deca igraju mašinom. Na taj način možete sprečiti bilo kakve izmene programa koji je u toku.



Ako se dugme za izbor programa okreće dok je aktivno zaključavanje zbog dece, na displeju se pojavljuje poruka "Con". Zaključavanje zbog dece ne dozvoljava nikakve promene programa i izabrane temperature, brzine i dodatnih funkcija.

Čak i ako se putem dugmeta za izbor programa izabere neki drugi program dok je funkcija zaključavanja zbog dece aktivna, prethodno izabrani program će nastaviti da radi.

Za aktiviranje zaključavanja zbog dece:

2. Pritisnite i držite dugme Dodatna funkcija tokom 3 sekunde. Oznake C03, C02, C01 prikazaće se na ekranu datim redom dok zadržavate pritisak na dugme 3 sekunde. Zatim, dok svetlo na tasteru za Dodatnu funkciju 2 treperi, oznaka „Con“ će se pojaviti na ekranu ukazujući na to da je zaključavanje zbog dece aktivirano. Ako pritisnete bilo koje dugme ili okrenete dugme za izbor programa dok je aktivno zaključavanje zbog dece, na displeju će se pojaviti ista poruka.

Za deaktiviranje zaključavanja zbog dece:

Pritisnite i zadržite pritisak na taster za dodatnu funkciju 2 tokom 3 sekunde za izbor programa. Oznake C03, C02, C01 prikazaće se na ekranu datim redom dok zadržavate pritisak na dugme 3 sekunde. Zatim, dok svetlo na tasteru za Dodatnu funkciju 2 treperi, oznaka „COF“ će se pojaviti na ekranu ukazujući na to da je zaključavanje zbog dece aktivirano.



Osim gore navedenog načina, za isključivanje funkcije zaključavanja zbog dece prebacite okruglu tipku za odabir programa u položaj uključeno/isključeno kad ne radi nijedan program i odaberite drugi program.

Zaključavanje zbog dece se neće onemogućiti nakon nestanka struje ili isključivanja kabla iz utičnice.

• **AntiCrease+ 3" (Protiv gužvanja)**

Ako pritisnete i zadržite tipku pomoćne funkcije 3 na 3 sekunde, ova funkcija će biti odabrana i upaliće se lampica za praćenje odnosnog programa. Kada je odabrana ova funkcija, bubanj će se okretati do 8 sati kako bi osiguralo da se odeća neće gužvati na kraju programa. U bilo kom momentu tokom ovih 8 sati možete opozvati program i isprazniti mašinu. Da završite funkciju samo pritisnite bilo koju tipku ili okrenite okruglu tipku za odabir programa. Svetlo za praćenje odnosnog programa će ostati upaljeno čak i kada ste prekinuli funkciju pritiskanjem bilo koje tipke. Ako okončate funkciju okretanjem okrugle tipke za odabir programa, svetlo za praćenje odnosnog programa će ostati upaljeno ili će se ugasiiti zavisno od odabranog programa. Ako ne otkažete funkciju pritiskanjem tipke pomoćne funkcije 3 na 3 sekunde, ista će tako biti korištena u narednom ciklusu pranja.

4.3.11 Podešavanje vremena završetka

Funkcija podešavanja vremena završetka omogućuje postavljanje kraja vremena programa do 19 sati. Možete povećati ovo vreme u 1-satnim intervalima.



Ne koristite tečni deterdžent ako ste odabrali funkciju podešavanja vremena završetka. Mrlje mogu ostati na odeći.

1. Otvorite vrata za punjenje, stavite rublje i deterdžent itd.
2. Odaberite program za pranje, temperaturu, brzinu centrifuge i po potrebi pomoćne funkcije.
3. Pritisnite tipku Podešavanje vremena završetka i odaberite željeno vreme.
4. Pritisnite tipku Početak/Pauza. Prikazano je vreme odloženog početka koje ste postavili. Započete odbrojavanje do odloženog završetka. Na ekranu se „_” premešta gore dolje odmah do vremena odloženog završetka.



Ako program nije pokrenut, možete dodati rublje u mašinu tokom odloženog vremena završetka

5. Na kraju odbrojavanja prikazaće se trajanje odabranog programa. Netaće znak „_” i započeće odabrani program.

Promena razdoblja odloženog početka

Ako želite promeniti vreme tokom odbrojavanja: Okrenite tipku za odabir programa za opoziv funkcije odloženog vremena završetka i ponovno postavite željeno vreme.

1. Pritisnite tipku za Podešavanje vremena završetka. Kada pritisnete prvi put, dužina programa će biti zaokružena do najbližeg celog broja za vreme. Svako naredno pritiskanje će povećati vreme za jedan sat.
2. Ako želite smanjiti odgođeno vreme završetka, pritisnite tipku Podešavanje vremena završetka uzastopno dok se ne prikaže željeno vreme.

Opoziv funkcije odloženog početka

Ako želite opozvati odbrojavanje odloženog vremena završetka i odmah uključiti program:

1. Postavite okruglu tipku za odabir programa na bilo koji program. Na ovaj način odloženog vreme završetka će biti opozvano. Svetlo za kraj/opoziv neprekidno svetli.
2. Zatim ponovno odaberite program koji želite pokrenuti.
3. Pritisnite tipku početak/pauza da biste pokrenuli program.

4.3.12 Pokretanje programa

1. Pritisnite tipku početak/pauza da biste pokrenuli program.
2. Upaliće se svetlo toka programa koje prikazuje pokretanje programa.



Ako ne pokrenete nijedan program ili ne pritisnete nijednu tipku u roku od 10 minuta tokom postupka odabira programa, svetla na ekranu će se isključiti. Kad se okrugla tipka za odabir programa okrene ili kad se pritisne bilo koja tipka, svetla na ekranu će se ponovno uključiti.

4.3.13 Napredak programa

Napredak programa koji radi može se pratiti na oznaci toka programa. Na početku svakog koraka programa zasvetliće odgovarajuća svetlosna lampica.



Ako je odabrana pomoćna funkcija „Protiv gužvanja+“ LED svetlo „END (Kraj)“ i LED svetlo „Protiv gužvanja+“ biće istovremeno upaljeni dok se ovaj korak nastavlja.

Za završetak programa dok je korak „Protiv gužvanja+“ pokrenut, jednostavno pritisnite bilo koju tipku ili okrenite okruglu tipku za odabir programa.

Možete promeniti postavke dodatnih funkcija, brzine i temperature bez zaustavljanja toka programa dok program radi. Da biste uradili ovo, promena koju nameravate provesti mora biti nešto što ćete obaviti nakon koraka programa koji je u toku. Ako promena nije kompatibilna, odgovarajuće lampice zasvitlice 3 puta.



Ako se mašina ne prebaci na korak centrifuge, možda je uključena funkcija zadržavanja ispiranja ili je uključen sistem za automatsko otkrivanje neuravnoteženog punjenja zbog neujednačene raspodele rublja u mašini..

4.3.14 Zaključavanje vrata za punjenje

Na vratima za punjenje mašine postoji sistem za zaključavanje koji sprečava otvaranje vrata za punjenje kada nivo vode nije odgovarajući.

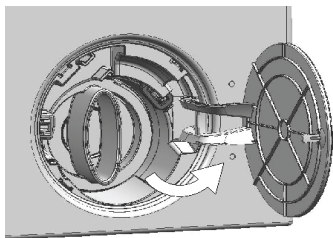
Lampica vrata za punjenje mašine počee da treperi kad se mašina prebaci na pauzu. Mašina proverava nivo vode unutar mašine. Ako je nivo vode odgovarajući, isključuje se lampica vrata za punjenje i mogu se otvoriti za 1–2 minuta.

Ako nivo vode nije odgovarajući, lampica vrata za punjenje i dalje svetli, a vrata za punjenje se ne mogu otvoriti. Ako morate otvoriti vrata za punjenje dok svetli lampica vrata za punjenje, morate opozvati trenutni program. Pogledajte „Opoziv programa“

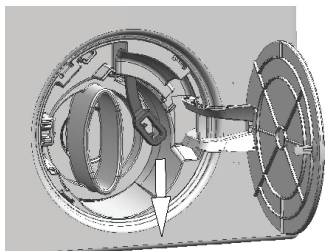


PAŽNJA!

- Pre otvaranja vrata za utovar, uverite se da u mašini nema vode kako biste izbegli poplave. Voda može biti vrela i može izazvati opekotine.



- Isključite aparat i izvucite utikač iz utičnice.
- Otvorite poklopac filtera pumpe



- Alat uklonite ručicu za slučaj opasnosti na vratima za utovar iza poklopca filtera.
- Otvorite vrata za utovar tako što ćete povući ručicu za slučaj opasnosti vrata za utovar prema dole.
- Pokušajte ponovo povući ručicu prema dolje ako vrata za utovar nisu otvorena.
- Nakon otvaranja vrata za utovar vratite ručicu za slučaj opasnosti vrata za punjenje u prvobitni položaj.

4.3.15 Promena odabira nakon početka izvođenja programa

Prebacivanje mašine na pasivni režim rada

Pritisnite tipku Početak/Pauza da biste prebacili mašinu u pasivni način rada dok program radi. Svetlo trenutnog programa će treperiti na oznaci toka programa, označavajući da je mašina prebačena na pauzu. Kad su vrata za punjenje spremna da se otvore, osim svetla koraka programa, svetlo vrata za punjenje će se takođe isključiti.

Promena pomoćne funkcije, brzine i temperature

Zavisno od toga do kojeg je koraka program došao, možete opozvati ili odabrati pomoćne funkcije. Pogledajte „Odabir pomoćne funkcije“.

Takođe možete promeniti podešavanje brzine i temperature. Pogledajte „Odabir brzine centrifuge“ i „Odabir temperature“.



Ako nije dozvoljena nikakva promena, odgovarajuća lampica indikatora zasvetliće 3 puta.

Dodavanje i uklanjanje rublja

1. Pritisnite tipku za početak/pauzu da biste mašinu prebacili na pauzu. Počinje treperiti lampica indikatora odgovarajućeg koraka toka programa tokom kojega je uređaj prebačen na pauzu.
2. Pričekajte da se vrata za punjenje mogu otvoriti.
3. Otvorite vrata za punjenje i dodajte ili izvadite rublje.
4. Zatvorite vrata za punjenje.
5. Po potrebi unesite izmene dodatnih funkcija, podešavanja temperature i brzine.
6. Pritisnite tipku početak/pauza da biste uključili mašinu.

4.3.16 Opoziv programa

Za opoziv programa okrenite tipku za odabir programa i odaberite drugi program. Prethodni program će se opozvati. Lampica indikatora za kraj/opoziv programa svetliće neprekidno da obavesti da je program opozvan. Vaša mašina će završiti program kad okrenete tipku za odabir programa; međutim, ne izbacuje vodu iznutra. Kad odaberete i pokrenete novi program, novoodabrani program započneće zavisno od koraka na kojem je opozvan prethodni program. Na primjer, možda će mašina uzeti još vode ili nastaviti prati s vodom koja je unutra.



Možda ćete ponovno morati staviti deterđent i omekšivač za novi program koji ste odabrali, zavisno od koraka na kojem je program opozvan.

4.3.17 Završetak programa

Na kraju programa će se prikazati „End (završetak)“.

1. Pričekajte dok se svetlo vrata za punjenje sasvim ne isključi.
2. Da biste isključili mašinu, postavite tipku za odabir programa u položaj uključiti/isključiti.
3. Izvadite rublje i zatvorite vrata za punjenje. Vaša mašina za pranje je spremna za sledeći ciklus pranja. Vaša mašina za pranje je spremna za sledeći ciklus pranja.

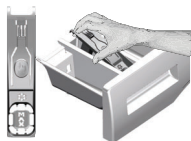
4.3.18 Vaša mašina ima funkciju „Režim pauze“.

Nakon upotrebe tipke uključeno/isključeno za uključivanje mašine, ako niste pokrenuli nijedan program u koraku odabira ili niste izveli ništa drugo, ili ne uradite ništa narednih 10 minuta nakon završetka odabranog programa, program će se automatski prebaciti u režim rada uštede energije. Također, ako proizvod ima ekran na kojem se prikazuje vreme programa, taj će se ekran potpuno isključiti. Okretanjem tipke za odabir programa ili dodirrom na bilo koju tipku, svetla i ekran vратиće se u prethodno stanje. Odabiri koje ste napravili izlaskom iz načina efikasne potrošnje električne energije mogu se promeniti. Proverite ispravnost svojih odabira pre nego ih pokrenete. Ako je potrebno napravite usklađivanje ponovno. Ovo nije greška.

4.4 Održavanje i čišćenje

Radni vek proizvoda se produžava i česti problemi će se smanjiti ako se čisti redovno.

4.4.1 Čišćenje fiokje za deterđent



Redovno (svakih 4-5 ciklusa pranja) čistite fiokju za deterđent kao što je pokazano u nastavku da biste sprečili taloženje praška tokom vremena.

Podignite zadnji deo sifona da biste ga izvadili, kao što je pokazano na slici.

Ako u odeljku za omeksišač počne da se nakuplja više mešavine vode i omeksišača nego obično, sifon mora da se očisti.

- 1 Pritisnite tačku na sifonu u odeljku za omeksišač i vucite prema sebi dok ne izvadite odeljak iz mašine.
- 2 Operite fiokju za deterđent i sifon u lavabou sa puno mlake vode. Da biste sprečili da ostaci dođu u kontakt sa vašim kožom, očistite ih odgovarajućom četkom noseći rukavice.
- 3 Posle čišćenja vratite fiokju na mesto i uverite se da je dobro postavljena.

4.4.2 Čišćenje vrata za punjenje i doboša

Ostaci omeksišača, deterđenta i prljavština mogu se vremenom nataložiti u vašoj mašini i prouzrokovati neprijatne mirise i loše pranje. Da biste to izbegli, koristite program za **čišćenje doboša**.



Proces čišćenja doboša treba ponavljati na svaka 2 meseca.

Koristite sredstvo za uklanjanje kamenca koje je podesno za mašine za pranje veša.



Posle svakog pranja proverite da nikakve materije nisu zaostale u dobošu.

Ako su otvori na odeljku (kao na slici) blokirani, otvorite ih pomoću čačkalice.

Strani metal će dovesti do stvaranja mrlja od rđe u dobošu. Očistite mrlje na površini bubnja koristeći sredstva za čišćenje za nerđajući čelik.

Nikada nemojte da koristite čeličnu bunu ili žičanu vunu. To će oštetiti obojenem, hromirane i plastične površine.

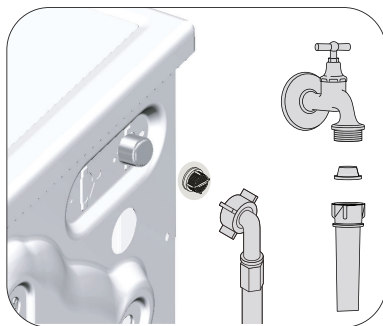
4.4.3 Čišćenje kućišta i komandne table

Kućište mašine obrišite sapunicom ili nekorozivnim blagim gel deterđentom, ako je potrebno, i osušite mekom krpom.

Za čišćenje komandne table koristite samo meku i vlažnu krpu.

4.4.4 Čišćenja filtera za dovod vode

Na kraju svakog ventila za dovod vode na poledini mašine i na kraju svakog creva za dovod vode, na mestu gde se spaja na slavinu, nalazi se filter. Ti filteri sprečavaju ulazak stranih tela i prljavštine iz vode u mašinu za pranje veša. Filteri treba da se čiste kad se uprljaju.



1. Zatvorite slavine.
2. Izvadite navrtke creva za dovod vode da biste pristupili filterima na ventilima za dovod vode. Očistite ih prikladnom četkom. Ako su filteri previše prljavi, izvadite ih pomoću klješta i očistite ih.
3. Izvadite filtere na ravnim krajevima creva za dovod vode zajedno sa zaptivačima i dobro ih očistite pod tekućom vodom.
4. Ponovo postavite zaptivke i filtere pažljivo i zategnite ih ručno.

4.4.5 Ispuštanje preostale vode i čišćenje filtera pumpe

Sistem filtera u Vašoj mašini sprečava da predmeti kao što su dugmad, novčići i niti tkanina začepi propeler pumpe za vreme izbacivanja vode od pranja. Zbog toga će voda biti izbačena bez ikakvih problema, a servisni vek trajanja pumpe će biti duži.

Ako mašina ne uspe da izbací vodu, filter pumpe može da bude začepljen. Filter se mora čistiti kad god je začepljen ili na svaka 3 meseca. Da bi se očistio filter pumpe prvo se mora izbaciti voda. Osim toga, pre transportovanja mašine (npr. preseljenje u drugu kuću) i u slučaju zamrzavanja vode, vodu ćete možda morati u potpunosti da izbacite.



PAŽNJA: Strane materije koje su zaostale u filteru pumpe mogu da oštete vašu mašinu ili da izazovu problem sa bukom.

PAŽNJA: Ako se proizvod ne koristi, isključite slavinu, skinite glavnu cev i istočite vodu iz mašine zbog smrzavanja.

PAŽNJA: Nakon svake upotrebe, isključite slavinu za glavni dotok vode.

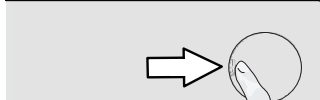
Da biste očistili prljavi filter i isпусти vodu:

1 Isključite mašinu da biste prekinuli dovod električne energije.



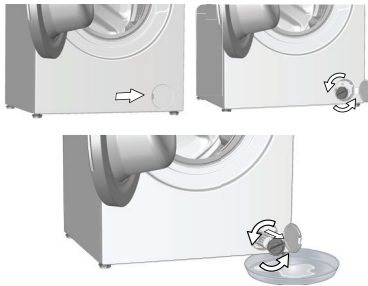
PAŽNJA: Temperatura vode u mašini može da se poveća do 90 °C. Da biste izbegli rizik od opekotina, očistite filter nakon što se voda u unutrašnjosti ohladi.

2. Otvorite poklopac za filter.



3 Pratite proceduru ispod da biste isпусти vodu.

Ako proizvod nema crevo za hitno ispuštanje vode, da biste isпусти vodu:



- Da biste sakupili vodu koja ističe iz filtera, postavite veći sud ispred filtera.
- Okrenite i olabavite filter pumpe dok voda ne počne da teče (u smeru suprotnom kretanju kazaljke na satu). Usmerite vodu koja teče u kofu koju ste stavili ispred filtera. Imajte uvek pri ruci krpu da biste pokupili prolivenu vodu.
- Kada se voda iz mašine potpuno izbací, okrećite filter da biste ga skinuli.

Problem	Uzrok	Rešenje
Programi ne počinju kada se vrata za punjenje zatvore.	Dugme za početak/pauzu/otkazivanje nije pritisnuto.	<ul style="list-style-type: none"> • Pritisnite dugme „početak/pauza/otkaži“.
	Zatvaranje vrata za punjenje veša može biti otežano u slučaju prekomernog punjenja.	<ul style="list-style-type: none"> • Smanjite količinu veša i postarajte se da vrata za punjenje budu pravilno zatvorena.
Program ne može da se uključi ili izabere.	Proizvod se možda prebacio u režim samozaštite zbog problema sa snabdevanjem (kao što su napon, pritisak vode itd.).	<ul style="list-style-type: none"> • Da biste otkazali program, okrenite dugme za izbor programa i izaberite drugi program. Prethodni program će biti otkazan. (pogledajte „Otkazivanje programa“)
Voda unutar proizvoda.	U proizvodu je ostalo malo vode zbog procesa kontrole kvaliteta u proizvodnji.	<ul style="list-style-type: none"> • To nije kvar; voda nije štetna za proizvod.
Proizvod ne uzima vodu.	Slavina je isključena.	<ul style="list-style-type: none"> • Otvorite slavinu.
	Crevo za ulaz vode je savijeno.	<ul style="list-style-type: none"> • Ispravite crevo.
	Filter za ulaz vode je zapušten.	<ul style="list-style-type: none"> • Očistite filter.
	Vrata za punjenje veša nisu zatvorena.	<ul style="list-style-type: none"> • Zatvorite vrata.
Proizvod ne izbacuje vodu.	Crevo za odvod vode je zapušeno ili savijeno.	<ul style="list-style-type: none"> • Očistite ili ispravite crevo.
	Filter pumpe je zapušten.	<ul style="list-style-type: none"> • Očistite filter pumpe.
Proizvod vibrira ili pravi buku.	Proizvod stoji nebalansiran.	<ul style="list-style-type: none"> • Uravnotežite proizvod podešavanjem nožica.
	Čvrsta materija je ušla u filter pumpe.	<ul style="list-style-type: none"> • Očistite filter pumpe.
	Nisu skinuti bezbednosni transportni vijci.	<ul style="list-style-type: none"> • Skinite bezbednosne transportne vijke.
	Moguće je da je količina veša u proizvodu premala.	<ul style="list-style-type: none"> • Dodajte više veša u proizvod.
	Stavljeno je previše veša u proizvod.	<ul style="list-style-type: none"> • Izvadite malo veša iz proizvoda ili rukom popravite ravnotežu veša.
	Proizvod se možda naslanja na kruti predmet.	<ul style="list-style-type: none"> • Pobrinite se da se proizvod ne naslanja ni na kakav predmet.
Voda curi na dnu proizvoda.	Crevo za odvod vode je zapušeno ili savijeno.	<ul style="list-style-type: none"> • Očistite ili ispravite crevo.
	Filter pumpe je zapušten.	<ul style="list-style-type: none"> • Očistite filter pumpe.
Proizvod je stao ubrzo nakon početka programa.	Mašina je privremeno zaustavljena zbog pada napona.	<ul style="list-style-type: none"> • Ona će nastaviti s radom kada se napon bude vratio na normalan nivo.
Proizvod direktno prazni vodu koju prihvata.	Crevo za odvod nije na odgovarajućoj visini.	<ul style="list-style-type: none"> • Povežite crevo za odvod kao što je opisano u korisničkom priručniku.
Voda se ne može videti u proizvodu tokom pranja.	Voda se nalazi u nevidljivom delu proizvoda.	<ul style="list-style-type: none"> • Ovo nije greška.
Vrata za ubacivanje veša se ne mogu otvoriti.	Zaključavanje vrata za ubacivanje veša je aktivirano zbog nivoa vode u proizvodu.	<ul style="list-style-type: none"> • Isпустite vodu pokretanjem programa Pumpa ili Centrifuga.
	Proizvod greje vodu ili je u ciklusu centrifuge.	<ul style="list-style-type: none"> • Sačekajte dok se program ne završi.
	Vrata za punjenje se mogu zaglaviti zbog pritiska kome su izložena.	<ul style="list-style-type: none"> • Uхватite ručku i povucite i gurnite vrata za punjenje da biste ih oslobodili i otvorili.
	Ako nema napajanja, vrata za punjenje na proizvodu neće se otvoriti.	<ul style="list-style-type: none"> • Da biste otvorili vrata za punjenje, otvorite poklopac filtera pumpe i povucite ručicu za hitne slučajeve koja se nalazi na zadnjoj strani spomenutog poklopcu. Pogledajte Brava na vratima za punjenje veša

Problem	Uzrok	Rešenje
Pranje traje duže nego što je naznačeno u korisničkom priručniku. (*)	Pritisak vode je nizak.	<ul style="list-style-type: none"> Proizvod čeka dok ne preuzme odgovarajuću količinu vode kako bi sprečio loš kvalitet pranja usled smanjene količine vode. Stoga, vreme pranja se produžava.
	Nizak napon.	<ul style="list-style-type: none"> Vreme pranja se produžava da bi se izbegli loši rezultati pranja kada je napon nizak.
	Temperatura dolazne vode je niska.	<ul style="list-style-type: none"> Vreme potrebno za grejanje vode se produžava u hladnim godišnjim dobima. Takođe, vreme pranja se može produžiti kako bise izbegli loši rezultati pranja.
	Broj ispiranja i/ili količina vode za ispiranje je povećana.	<ul style="list-style-type: none"> Proizvod povećava količinu vode za ispiranje kada je potrebno dobro ispiranje i dodaje dodatni korak ispiranja ako je potrebno.
	Došlo je do stvaranja prevelike pene i aktiviran je sistem za automatsku apsorpciju pene zbog prekomerne količine deterdženta.	<ul style="list-style-type: none"> Koristite preporučenu količinu deterdženta.
Trajanje programa se ne odbrojava. (kod modela sa displejem) (*)	Tajmer je možda zaustavljen zbog uzimanja vode.	<ul style="list-style-type: none"> Tajmer neće odbrojavati dok proizvod ne uzme dovoljnu količinu vode. Proizvod će sačekati dok u njoj ne bude dovoljna količina vode da bi se izbegli slabi rezultati pranja zbog nedostatka vode. Indikator tajmera će nakon toga nastaviti sa odbrojavanjem.
	Tajmer se može zaustaviti tokom koraka zagrevanja.	<ul style="list-style-type: none"> Indikator tajmera neće odbrojavati dok proizvod ne dostigne izabranu temperaturu.
	Tajmer se može zaustaviti tokom koraka centrifugiranja.	<ul style="list-style-type: none"> Došlo je do aktiviranja sistema za automatsku detekciju neuravnoteženog opterećenje zbog neujednačene raspodele veša u proizvodu.
Trajanje programa se ne odbrojava. (*)	U proizvodu ima nebalansiranog veša.	<ul style="list-style-type: none"> Došlo je do aktiviranja sistema za automatsku detekciju neuravnoteženog opterećenje zbog neujednačene raspodele veša u proizvodu.
Proizvod ne prabacuje na korak centrifugiranja. (*)	U proizvodu ima nebalansiranog veša.	<ul style="list-style-type: none"> Došlo je do aktiviranja sistema za automatsku detekciju neuravnoteženog opterećenje zbog neujednačene raspodele veša u proizvodu.
	Proizvod neće centrifugirati ako se voda ne isprazni u potpunosti.	<ul style="list-style-type: none"> Proverite filter i crevo za pražnjenje.
	Došlo je do stvaranja prevelike pene i aktiviran je sistem za automatsku apsorpciju pene zbog prekomerne količine deterdženta.	<ul style="list-style-type: none"> Koristite preporučenu količinu deterdženta.
Učinak pranja je loš: Veš postaje siv. (**)	Nedovoljna količina deterdženta se koristi tokom dužeg vremenskog perioda.	<ul style="list-style-type: none"> Koristite preporučenu količinu deterdženta koja odgovara tvrdoći vode i vešu.
	Pranje je obavljeno na niskim temperaturama tokom dužeg vremena.	<ul style="list-style-type: none"> Izaberite odgovarajuću temperaturu za pranje veša.
	Nedovoljna količina deterdženta se koristi sa tvrdom vodom.	<ul style="list-style-type: none"> Korišćenje nedovoljne količine deterdženta sa tvrdom vodom dovodi do lepljenja nečistoća na odeću i vremenom odeća postaje siva. Teško je eliminisati sivu boju kada se to dogodi. Koristite preporučenu količinu deterdženta koja odgovara tvrdoći vode i vešu.
	Prekomerna količina deterdženta se koristi.	<ul style="list-style-type: none"> Koristite preporučenu količinu deterdženta koja odgovara tvrdoći vode i vešu.

Problem	Uzrok	Rešenje
Učinkan pranja je loš: Mrlje istrajavaju ili se veš ne beli. (**)	Koristi se nedovoljna količina deterdženta.	<ul style="list-style-type: none"> • Koristite preporučenu količinu deterdženta koja odgovara tvrdoći vode i vešu.
	Stavljeno je previše veša.	<ul style="list-style-type: none"> • Nemojte prekomerno da ubacujete veš u proizvod. Ubacite količine veša preporučene u „Tabeli programa i potrošnje“.
	Izabrani su pogrešan program i temperatura.	<ul style="list-style-type: none"> • Izaberite odgovarajuću temperaturu i program za pranje veša.
	Pogrešan tip deterdženta se koristi.	<ul style="list-style-type: none"> • Koristite originalni deterdžent koji odgovara proizvodu.
	Prekomerna količina deterdženta se koristi.	<ul style="list-style-type: none"> • Stavite deterdžent u odgovarajući odeljak. Nemojte da mešate sredstvo za beljenje i deterdžent.
Učinkan pranja je loš: Mrlje od ulja ostaju na vešu. (**)	Regularno pranje u bubnju se ne primenjuje.	<ul style="list-style-type: none"> • Očistite bubanj redovno. Za ovu proceduru pogledajte odeljak „Čišćenje vrata za punjenje i bubnja“.
Učinkan pranja je loš: Odeća ne miriše prijatno. (**)	Miris i slojevi bakterija se formiraju na bubnju kao rezultat neprekidnog pranja na nižim temperaturama / ili kraćim programima.	<ul style="list-style-type: none"> • Ostavite fioku deterdženta kao i vrata za ubacivanje veša na proizvodu otvorene nakon svakog pranja. Tako neće doći do stvaranja vlažnog okruženja koje odgovara baterijama.
Boja odeće bleđi. (**)	Ubačena je prekomerna količina veša.	<ul style="list-style-type: none"> • Nemojte prekomerno da ubacujete veš u proizvod.
	Deterdžent koji se koristi je vlažan.	<ul style="list-style-type: none"> • Deterdžente držite zatvorenim u okruženju koje nije vlažno i nemojte da ih izlažete prekomernim temperaturama.
	Izabrana je viša temperatura.	<ul style="list-style-type: none"> • Izaberite odgovarajući program i temperaturu u skladu sa tipom i stepenom zaprljanosti veša.
Mašina ne ispira dobro.	Količina, brend i uslovi skladištenja deterdženta koji se koristi je neodgovarajući.	<ul style="list-style-type: none"> • Koristite deterdžent koji odgovara mašini za pranje i vašem vešu. Deterdžente držite zatvorenim u okruženju koje nije vlažno i nemojte da ih izlažete prekomernim temperaturama.
	Deterdžent je stavljen u pogrešan odeljak.	<ul style="list-style-type: none"> • Ako se deterdžent stavi u odeljak za pretpranje iako ciklus za pretpranje nije izabran, proizvod može da uzme taj deterdžent za vreme koraka ispiranja ili oplemenjivača. Stavite deterdžent u odgovarajući odeljak.
	Filter pumpe je zapušen.	<ul style="list-style-type: none"> • Proverite filter.
	Crevo za odvod je savijeno.	<ul style="list-style-type: none"> • Proverite crevo za odvod.
Veš postaje krut nakon pranja. (**)	Koristi se nedovoljna količina deterdženta.	<ul style="list-style-type: none"> • Korišćenjem nedovoljne količine deterdženta u poređenju sa tvrdoćom vode može dovesti do stvrdnjavanja vode vremenom. Koristite odgovarajuću količinu deterdženta na osnovu tvrdoće vode.
	Deterdžent je stavljen u pogrešan odeljak.	<ul style="list-style-type: none"> • Ako se deterdžent stavi u odeljak za pretpranje iako ciklus za pretpranje nije izabran, proizvod može da uzme taj deterdžent za vreme koraka ispiranja ili oplemenjivača. Stavite deterdžent u odgovarajući odeljak.
	Deterdžent je pomešan sa omekšivačem.	<ul style="list-style-type: none"> • Nemojte da mešate omekšivač sa deterdžentom. Operite i očistite fioku vrućom vodom.
Veš ne miriše kao omekšivač. (**)	Deterdžent je stavljen u pogrešan odeljak.	<ul style="list-style-type: none"> • Ako se deterdžent stavi u odeljak za pretpranje iako ciklus za pretpranje nije izabran, proizvod može da uzme taj deterdžent za vreme koraka ispiranja ili oplemenjivača. Operite i očistite fioku vrućom vodom. Stavite deterdžent u odgovarajući odeljak.
	Deterdžent je pomešan sa omekšivačem.	<ul style="list-style-type: none"> • Nemojte da mešate omekšivač sa deterdžentom. Operite i očistite fioku vrućom vodom.

Problem	Uzrok	Rešenje
Deterdžent zaostaje u fioci za deterdžent. (**)	Deterdžent je stavljen u vlažnu fioku.	<ul style="list-style-type: none"> Osušite fioku za deterdžent pre stavljanja deterdženta.
	Deterdžent je navlažen.	<ul style="list-style-type: none"> Deterdžente držite zatvorenim u okruženju koje nije vlažno i nemojte da ih izlažete prekomernim temperaturama.
	Pritisak vode je nizak.	<ul style="list-style-type: none"> Proverite pritisak vode.
	Deterdžent u odeljku za glavno pranje je navlažen tokom uzimanja vode za prepranje. Otvori odeljka za deterdžent su blokirani.	<ul style="list-style-type: none"> Proverite otvore i očistite ako su zapušeni.
	Postoji problem sa ventilima u fioci za deterdžent.	<ul style="list-style-type: none"> Pozovite ovlašćenog servisera.
	Deterdžent je pomešan sa omekšivačem.	<ul style="list-style-type: none"> Nemojte da mešate omekšivač sa deterdžentom. Operite i očistite fioku vrućom vodom.
	Regularno pranje u bubnju se ne primenjuje.	<ul style="list-style-type: none"> Očistite bubanj redovno. Za ovu proceduru pogledajte odeljak „Čišćenje vrata za punjenje i bubnja“.
Previše pene se stvara u proizvodu. (**)	Neodgovarajući deterdžent za pranje mašine se koristi.	<ul style="list-style-type: none"> Koristite deterdžent koji odgovara mašini za pranje.
	Prekomerna količina deterdženta se koristi.	<ul style="list-style-type: none"> Koristite samo dovoljnu količinu deterdženta.
	Deterdžent se skladišti u neodgovarajućim uslovima.	<ul style="list-style-type: none"> Čuvajte deterdžent na zatvorenoj i suvoj lokaciji. Nemojte da ga čuvate na prekomerno vrućim mestima.
	Neki mešoviti veš kao što je veš od tila može da pravi prekomernu penu zbog svoje teksture.	<ul style="list-style-type: none"> Koristite manje količine deterdženta za ovaj tip odeće.
	Deterdžent je stavljen u pogrešan odeljak.	<ul style="list-style-type: none"> Stavite deterdžent u odgovarajući odeljak.
	Omekšivač se preuzima rano u proizvodu.	<ul style="list-style-type: none"> Može postojati problem sa ventilima ili u odeljku za deterdžent. Pozovite ovlašćenog servisera.
Pena izlazi iz fioke za deterdžent.	Koristi se previše deterdženta.	<ul style="list-style-type: none"> Izmešajte 1 kašiku omekšivača i ½ litra vode i sipajte u odeljak za glavno pranje fioke za deterdžent.
		<ul style="list-style-type: none"> U proizvod stavite deterdžent koji je pogodan za programe i maksimalna opterećenja navedena u "Tabeli programa i korišćenja". Ako koristite dodatne hemikalije (sredstva za uklanjanje fleka, izbeljivače itd.) smanjite količinu deterdženta.
Veš ostaje mokar na kraju programa. (*)	Došlo je do stvaranja prevelike pene i aktiviran je sistem za automatsku apsorpciju pene zbog prekomerne količine deterdženta.	<ul style="list-style-type: none"> Koristite preporučenu količinu deterdženta.

(*) Proizvod se ne prebacuje na korak centrifuge ako veš nije raspodeljen ravnomerno u bubnju da bi se sprečilo oštećenje proizvoda i njegove okoline. Veš treba da se ponovo preraspodeli i da se ponovo uključi centrifuga.

(**) Regularno pranje u bubnju se ne primenjuje. Očistite bubanj redovno. Pogledajte 4.4.2



UPOZORENJE: Ako ne možete da otklonite problem iako ste pratili uputstva iz ovog odeljka, obratite se svom dobavljaču ili ovlašćenom serviseru. Nikad nemojte sami da pokušavate da popravite neispravan proizvod.

ODRICANJE ODGOVORNOSTI / UPOZORENJE

Krajnji korisnik može na neke (jednostavne) kvarove na adekvatan način rešiti bez ikakvog sigurnosnog problema ili nesigurne upotrebe, pod uslovom da se to izvrši u granicama i u skladu sa sledećim uputstvima (pogledajte odeljak „Popravka obavljena lično“).

Prema tome, ukoliko drugačije nije dozvoljeno u odeljku „Popravka obavljena lično“ u nastavku, popravke će biti upućene registrovanim profesionalnim serviserima kako bi se izbegli sigurnosni problemi. Registrovani profesionalni serviser je profesionalni serviser kome je proizvođač odobrio pristup uputstvima i spisku rezervnih delova ovog proizvoda prema metodama opisanim u zakonodavnim aktima shodno Direktivi 2009/125/EZ. **Međutim, samo servisni agent (tj. Ovlašćeni profesionalni serviseri) do kog možete doći putem telefonskog broja navedenog u korisničkom priručniku / garatnom listu ili preko vašeg ovlašćenog prodavca može pružiti uslugu koja zadovoljava uslove garancije. Stoga, imajte na umu da popravke profesionalnih serviseri (koje Beko nije ovlastio) poništavaju garanciju.**

Popravka obavljena lično

Krajnji korisnik može da izvrši popravku lično u pogledu sledećih rezervnih delova: vrata, šarke i zaptivke vrata, druge zaptivke, sklop zaključavanja vrata i plastične periferne jedinice kao što su dozatori deterđenta (ažurirani spisak dostupan je na support.beko.com od 1. marta 2021.).

Štaviše, da bi se osigurala sigurnost proizvoda i sprečio rizik od ozbiljnih povreda, pomenuta popravka obavljena lično treba da se obavi prema uputstvima u korisničkom priručniku za popravku obavljenu lično koja su dostupna na support.beko.com. Iz sigurnosnih razloga isključite proizvod iz napajanja pre pokušaja bilo kakvog popravljavanja.

Popravke i pokušaji popravke od strane krajnjih korisnika za delove koji nisu na datoj listi i/ili se ne pridržavaju uputstava u korisničkim priručnicima za popravu obavljenu lično ili koja su dostupna na support.beko.com, mogli bi pokrenuti sigurnosna pitanja koja se ne mogu pripisati odgovornosti kompanije Beko, a koja će poništiti garanciju za proizvod.

Zbog toga se toplo preporučuje da se krajnji korisnici uzdrže od pokušaja popravke koja nije u skladu sa pomenutom listom rezervnih delova, kontaktirajući u takvim slučajevima ovlašćene profesionalne servisere ili registrovane profesionalne servisere. Naprotiv, takvi pokušaji krajnjih korisnika mogu da dovedu do sigurnosnih problema i oštete proizvod i posledično dovedu do požara, poplave, strujnog udara i ozbiljnih povreda.

Kao primer, ali ne ograničavajući se na sledeće, za popravke sledećeg moraju se kontaktirati ovlašćeni profesionalni serviseri ili registrovani profesionalni serviseri: motor, sklop pumpe, glavna ploča, motorna ploča, ekran, grejači itd.

Proizvođač/prodavac ne može biti odgovoran ni u kom slučaju kada krajnji korisnici ne postupe u skladu sa gore navedenim.

Dostupnost rezervnih delova mašine za pranje ili mašine za pranje i sušenje veša koju ste kupili je 10 godina. Tokom ovog perioda biće dostupni originalni rezervni delovi za pravilno rukovanje mašinom za pranje ili mašinom za pranje i sušenje veša.

Kada je uređaj isključen, ako dugo pritisnete tastere 1 i 2 za pomoćne funkcije, na ekranu uređaja se prikazuje odbrojavanje 3-2-1 i kompletni ciklusi pranja koji su završeni.

Nakon prikaza kompletnog ciklusa pranja, prikazuju se kodovi kvarova, ako ih ima. Pomoću tabe u nastavku proverite informacije na ekranu.

Informacije na ekranu	Uzrok	Rešenje
Greška	Na uređaju se pokreće bezbednosni algoritam.	Sačekajte da tekst nestane. Nakon pritiska tastera za pomoćne funkcije 1 i 2, proverite informacije na ekranu.
SC	Vaša reklamacija nije rešena tokom provere.	Pozovite ovlašćeni servis.
E5	Filter pumpe je možda začepljen.	Očistite filter pumpe. Pogledajte odeljak „Ispuštanje preostale vode i čišćenje filtera pumpe“. Pokušajte sa ciklusom centrifuge. Ako problem nije rešen, pozovite servis.
E8	Mašina možda nema dovod vode.	<ul style="list-style-type: none"> • Otvorite slavine. • Proverite da li ima dotoka vode. • Proverite priključak creva za dovod vode, ako se crevo previlo, ispravite ga. • Očistite filter pumpe. Pogledajte odeljak „Ispuštanje preostale vode i čišćenje filtera pumpe“. • Zatvorite prednji poklopac mašine. Proverite da li je poklopac zatvoren. Uključite mašinu još jednom. Ako problem nije rešen, pozovite servis.
E29	Proizvod je prešao u režim samozaštite zbog problema sa napajanjem (mrežni napon, pritisak vode itd.).	Za opoziv programa okrenite tipku za odabir programa i odaberite drugi program. Prethodni program će se opozvati. Pogledajte odeljak „Otkazivanje programa“ Ako se problem i dalje javlja, pozovite servis.
E17	Višak pene je prisutan u mašini nakon završenog ciklusa.	<ul style="list-style-type: none"> • Deterdžent čuvajte na zatvorenom i suvom mestu. Ne skladištite na preterano vrućim mestima. • Koristite manje količine deterdženta za porozno rublje poput tila. • Koristite količinu deterdženta koja odgovara količini veša i nivou zaprjanosti. • Koristite samo dovoljnu količinu deterdženta. • Obavezno stavite deterdžent u odgovarajući odeljak. • Pokrenite program za čišćenje bubnja sa praznom mašinom. Pogledajte program „Čišćenje bubnja“ Ako vaša mašina ne uključuje program za čišćenje bubnja, možete koristiti pamuk 90C. <ul style="list-style-type: none"> • Nakon pokretanja kratkog programa bez deterdženta, proverite mašinu. Ako se problem i dalje javlja, pozovite servis.
E18	Centrifuga se ne pokreće zato što mašina nije nivelisana.	Proverite veš u mašini. Količina veša možda nije dovoljna. Pokušajte tako što ćete povećati količinu veša. Veš možda stvara neravnotežu; ručno razvrstajte veš i ravnomerno ga rasporedite unutar uređaja. Pokušajte ponovo sa ciklusom centrifuge.
E12	U mašini možda ima vode.	Isključite mašinu. Ispod mašine možda ima vode. Očistite vodu ispod mašine. Ponovo uključite mašinu. Pokušajte da pokrenete kratki ciklus. Ako se problem nastavi ili vidite da voda curi iz jednog od creva, zatvorite ventile i pozovite servis.
E27	Proverite odvod vode iz mašine.	Pogledajte odeljak „Povezivanje odvodne cevi sa odvodom“.
E84	Veza BLE (Bluetooth sa niskom potrošnjom energije) se ne može uspostaviti.	Proverite, pokušajte da se povežete. Pogledajte odeljak „Funkcija HomeWhiz i funkcija daljinskog upravljanja“. Ako se problem i dalje javlja, pozovite servis.

