

# beko

## Caffe Esperto

### Semi Automatic Espresso Machine

Series CE 3000



Source: Euromonitor International Limited. Large Appliances as per "Major Appliances" in Consumer Appliances 2023ed. retail volume, 2022 data.

# Features



## 2 Options 1 Touch

Delivers two delicious espresso-based coffee options at the touch of a button, fast, easy, and exceptional every time, also provides the convenience of hot water on demand for preparing a variety of beverages.



## Professional 15 Bar Pressure

Applies 15 bars of pressure for efficient performance, ensuring smooth and consistent results with every use.



## Colorful Touch Screen Panel

Allows users to easily brew coffee with user-friendly color touch screen panel and perform cleaning and descaling tasks effortlessly for optimal maintenance.



## Integrated Milk Frother

Enhances coffee experience to new heights with the convenience of integrated milk frother, delivering perfectly frothed milk for beverages like Latte, Cappuccino and many more.



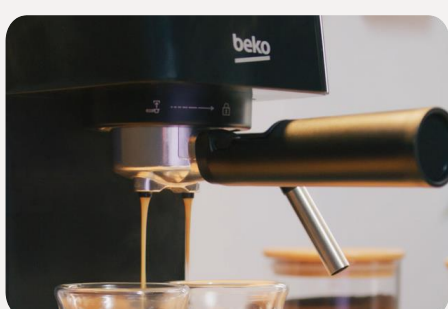
## Compact Design

With its compact and elegant 14.4 cm design, it seamlessly fits onto any countertop or coffee corner.



## Integrated Cup Holder

Keeps cups within reach for effortless serving, adding convenience with an integrated cup holder that also warms the cups for the perfect coffee experience.



## 2 Coffee Outlets

Delivers twice the satisfaction with dual pour capability and allows users to enjoy two cups of coffee at the same time.

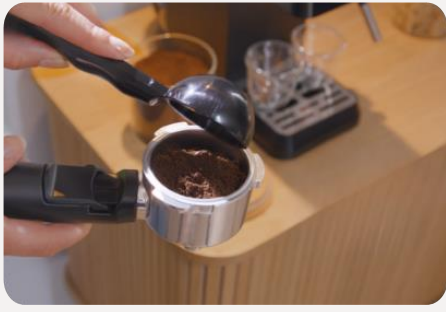


## Memory Function

Customizes and saves preferred coffee amounts with the built-in memory, enabling users to adjust the coffee's intensity and achieve consistent results with just a touch.

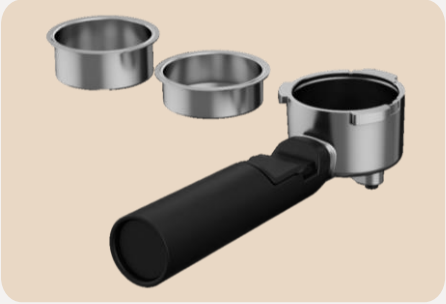
a **beko** state of mind

# Features



## Includes Spoon with Tamper

Enhances the art of coffee-making with tamper which ensures the perfect press for espresso and adds a touch to coffee preparation routine.



## BrewSense™ Technology

Ensures perfect coffee with BrewSense™ Technology which delivers barista-quality brews with the help of 51 mm portafilter featuring easy knock handle.



## Rinsing & Descaling in One Touch

Maintains cleanliness with rinsing & descaling functions, detachable parts including water tank, drip tray, portafilter and its baskets can be cleaned easily.



## Removable Water Tank

Enhances coffee experience with removable water tank with 1.1 L capacity, allowing for easy preparation, handling and cleaning.



## Silent Operation

Features a silent operation that guarantees a peaceful and serene brewing experience.



## Easy Repairability

User-friendly detachable design ensures hassle-free access to all parts, allows to address any issues efficiently and effectively.

a **beko** state of mind

# CEP 5302 B

## Functions & Features

220-240 V ~ 50-60 Hz  
1628 Watts Power  
15 Bar Pressure  
Color Film Touch Panel Screen  
Espresso, Double in One Touch  
2 Coffee Outlets  
Integrated Milk Frother  
Rinsing & Descaling Functions  
BrewSense™ Technology  
Adjustable Coffee Amounts  
Cup Holder  
Auto Shut-off  
1.1 L Detachable Water Tank Capacity  
Up to 0.2 L Removable Drip Tray  
Drip Tray Level Indicator  
Short Pre-heating Time  
Basket Capacities:  
Single: 8 g  
Double: 15 g

## Accessories

Coffee Tamper with Spoon

## Product Dimensions

14.4 cm (Width)  
30.8 cm (Height)  
42.3 cm (Depth)  
32.5 cm (Depth w/o portafilter)  
Weight: 3.85±0.5 kg

## Design & Color Specifications

Color: Black

## Sustainability

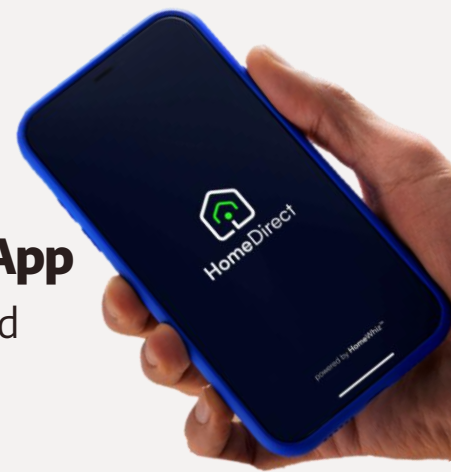
BPA Free Product  
EPS-free Packaging  
100% Recycled and Recyclable Cardboard

## Hot Coffee Drinks



### Explore 30+ Coffee Recipes with HomeDirect Mobile App

Through HomeDirect Mobile App, users can access over 30 coffee-related recipes, including various refreshing cold coffee options.



a **beko** state of mind

\*Specifications are correct at time of printing. Specifications may change without prior notice.